

**M+ Museum**

[illegible]

<div></div> Forecast Bar	<div>M+ 3 Months Rolling Programme</div> <div>3MRP Rev B (2nd draft)</div> <div>Main Works Contract for M+ Museum Project</div>	Page 1 of 11	Date	Revision	Checked	Approved
◆ ◆ Milestone			02-Dec-15	3MRP Rev B (1st Draft)	Edgar / Chris	Leo Harnett
			31-Dec-15	3MRP Rev B (2nd Draft)	Den / Chris	Leo Harnett

Activity ID	Activity Name	Duration	Start	Finish	Quants	Production rates	December					January				February				March				7		
							29	06	13	20	27	03	10	17	24	31	07	14	21	28	06	13	20	27		
	3MPS.1040	Consultant/CA Review & Approval	47	05-Nov-15 A	03-Jan-16							Consultant/CA Review & Approval														
	3MPS.1042	Consultant/CA Review & Approval	53	26-Oct-15 A	31-Dec-15							Consultant/CA Review & Approval														
	3MPS.1047	Method statement for B2 structure (M+ & DCS)	60	20-Oct-15 A	03-Jan-16							Method statement for B2 structure (M+ & DCS)														
	3MPS.1048	Consultant/CA Review & Approval	11	03-Jan-16	17-Jan-16							Consultant/CA Review & Approval														
	3MPS.1049	Method statement for B1 structure (M+ & DCS)	22	30-Dec-15	26-Jan-16							Method statement for B1 structure (M+ & DCS)														
	3MPS.1050	Consultant/CA Review & Approval	11	26-Jan-16	09-Feb-16							Consultant/CA Review & Approval														
	3MPS.1051	Falsework design for B1 structure (M+ & DCS)	31	30-Dec-15	06-Feb-16							Falsework design for B1 structure (M+ & DCS)														
	3MPS.1052	Consultant/CA Review & Approval	11	06-Feb-16	20-Feb-16							Consultant/CA Review & Approval														
	3MPS.1053	Method statement for setting up TC1 & TC3	45	15-Nov-15 A	09-Jan-16							Method statement for setting up TC1 & TC3														
	3MPS.1054	Consultant/CA Review & Approval	11	09-Jan-16	23-Jan-16							Consultant/CA Review & Approval														
	3MPS.1055	Method statements for Mega Trusses (sequence, falsework etc)	31	30-Dec-15	06-Feb-16							Method statements for Mega Trusses (sequence, falsework etc)														
	3MPS.1056	Consultant/CA Review & Approval	7	06-Feb-16	14-Feb-16							Consultant/CA Review & Approval														
	3MPS.1058	Consultant/CA Review & Approval	43	10-Nov-15 A	03-Jan-16							Consultant/CA Review & Approval														
	3MPS.1059	Back propping design for Cranage for Mega Trusses	31	30-Dec-15	06-Feb-16							Back propping design for Cranage for Mega Trusses														
	3MPS.1060	Consultant/CA Review & Approval	7	06-Feb-16	14-Feb-16							Consultant/CA Review & Approval														
	Facade Submission and Approval		36	28-Nov-15 A	12-Jan-16																					
	3MPS.1062	Consultant/CA Review & Approval	33	29-Nov-15 A	08-Jan-16							Consultant/CA Review & Approval														
	3MPS.1063	Facade Design proposal sketches for all areas of the facade system(s)	26	28-Nov-15 A	30-Dec-15							Facade Design proposal sketches for all areas of the facade system(s)														
	3MPS.1064	Consultant/CA Review & Approval	35	29-Nov-15 A	12-Jan-16							Consultant/CA Review & Approval														
	3MPS.1066	Consultant/CA Review & Approval	35	29-Nov-15 A	11-Jan-16							Consultant/CA Review & Approval														
	3MPS.1068	Consultant/CA Review & Approval	35	29-Nov-15 A	11-Jan-16							Consultant/CA Review & Approval														
	Essential submissions on Programme, Health and Safety, Security, Quality etc		48	02-Nov-15 A	01-Jan-16																					
	HSEQ & Management Plan		48	02-Nov-15 A	01-Jan-16																					
	3MPS.1086	Consultant/CA Review & Approval	48	02-Nov-15 A	01-Jan-16							Consultant/CA Review & Approval														
	Temporary services and site facilities		101	02-Oct-15 A	05-Feb-16																					
	Site Establishment & Temporary Facilities		101	02-Oct-15 A	05-Feb-16																					
	3MPS.1003	Hoarding Handover and Modification Works	30	30-Dec-15	05-Feb-16							Hoarding Handover and Modification Works														
	3MPS.1004	WSD - Apply for temporary water supply (Bachy)	87	02-Oct-15 A	18-Jan-16							WSD - Apply for temporary water supply (Bachy)														
	M+.20 Construction Works (Excavation & ELS)		87	11-Dec-15 A	01-Apr-16																					
	M+ AEL North - North of AEL		86	11-Dec-15 A	01-Apr-16																					
	Stage 1 - BD		74	11-Dec-15 A	15-Mar-16																					
	Stage 1 - Site Formation (Area A)		12	14-Dec-15 A	31-Dec-15																					
	3MSS.1004	Excavate +1.8mPD to _2.30mPD for B2 Slab Formation Level (GL C'-G'/2-7') -	11	14-Dec-15 A	30-Dec-15	3096m3	2 machines @ 700m3/day						Excavate +1.8mPD to _2.30mPD for B2 Slab Formation Level (GL C'-G'/2-7') - Portion A2													
	3MSS.1005	Excavate +1.8mPD to _2.30mPD for B2 battered slope (GL B'-C'/2-4') - Portion	11	14-Dec-15 A	30-Dec-15	1290m3	2 machines @ 700m3/day						Excavate +1.8mPD to _2.30mPD for B2 battered slope (GL B'-C'/2-4') - Portion A2													
	3MSS.1006	Excavate +1.8mPD to _2.30mPD for B2 Slab Formation Level (GL C'-F'/2-4') - I	8	18-Dec-15 A	31-Dec-15	1038m3	2 machines @ 700m3/day						Excavate +1.8mPD to _2.30mPD for B2 Slab Formation Level (GL C'-F'/2-4') - Portion A3													
	3MSS.1007	Excavate +1.8mPD to _2.30mPD for B2 battered slope (GL I'-E'/6-4') - Portion	6	21-Dec-15 A	31-Dec-15	3036m3	2 machines @ 700m3/day						Excavate +1.8mPD to _2.30mPD for B2 battered slope (GL I'-E'/6-4') - Portion A3													
	Stage 1 - Pile Cap Construction (Area A)		39	16-Dec-15 A	03-Feb-16																					
	Portion A1i		6	30-Dec-15	06-Jan-16																					
	CPC40 (Type 07)		0	31-Dec-15	02-Jan-16																					
	3MSS.1032	concrete pouring - CPC 40 (07) - Portion A1i	0	31-Dec-15	02-Jan-16	24.5m3						concrete pouring - CPC 40 (07) - Portion A1i														
	CPC41 (Type 07)		6	30-Dec-15	06-Jan-16																					
	3MSS.10134	Concreting for Vertical blinding - Portion A1i	1	30-Dec-15	30-Dec-15							Concreting for Vertical blinding - Portion A1i														
	3MSS.10135	Strip formwork - Portion A1i	1	31-Dec-15	31-Dec-15							Strip formwork - Portion A1i														
	3MSS.10136	Install waterproofing - Portion A1i	1	02-Jan-16	02-Jan-16							Install waterproofing - Portion A1i														
	3MSS.10137	Backfill - Portion A1i	1	04-Jan-16	04-Jan-16							Backfill - Portion A1i														
	3MSS.1020	Rebar Installation - CPC 41 (07) - Portion A1i	1	05-Jan-16	05-Jan-16	22.05T	5 men @ 0.9T/man/day						Rebar Installation - CPC 41 (07) - Portion A1i													
	3MSS.1034	concrete pouring - CPC 41 (07) - Portion A1i	1	06-Jan-16	06-Jan-16	24.5m3						concrete pouring - CPC 41 (07) - Portion A1i														
	Portion A1ii		23	16-Dec-15 A	15-Jan-16																					
	CPC42 (Type 07)		6	30-Dec-15	06-Jan-16																					
	3MSS.10154	Concreting for Vertical blinding - Portion A1ii	1	30-Dec-15	30-Dec-15							Concreting for Vertical blinding - Portion A1ii														
	3MSS.10155	Strip formwork - Portion A1ii	1	31-Dec-15	31-Dec-15							Strip formwork - Portion A1ii														
	3MSS.10156	Install waterproofing - Portion A1ii	1	02-Jan-16	02-Jan-16							Install waterproofing - Portion A1ii														
	3MSS.10157	Backfill - Portion A1ii	1	04-Jan-16	04-Jan-16							Backfill - Portion A1ii														
	3MSS.1022	Rebar Installation - CPC 42 (07) - Portion A1ii	1	05-Jan-16	05-Jan-16	22.05T	5 men @ 0.9T/man/day						Rebar Installation - CPC 42 (07) - Portion A1ii													
	3MSS.1036	concrete pouring - CPC 42 (07) - Portion A1ii	1	06-Jan-16	06-Jan-16	24.5m3						concrete pouring - CPC 42 (07) - Portion A1ii														
	CPC43 (Type 03)		6	30-Dec-15	06-Jan-16																					
	3MSS.10144	Concreting for Vertical blinding - Portion A1 ii	1	30-Dec-15	30-Dec-15							Concreting for Vertical blinding - Portion A1 ii														
	3MSS.10145	Strip formwork - Portion A1ii	1	31-Dec-15	31-Dec-15							Strip formwork - Portion A1ii														
	3MSS.10146	Install waterproofing - Portion A1ii	1	02-Jan-16	02-Jan-16							Install waterproofing - Portion A1ii														
	3MSS.10147	Backfill - Portion A1ii	1	04-Jan-16	04-Jan-16							Backfill - Portion A1ii														
	3MSS.1021	Rebar Installation - CPC 43 (07) - Portion A1ii	1	05-Jan-16	05-Jan-16	22.05T	5 men @ 0.9T/man/day						Rebar Installation - CPC 43 (07) - Portion A1ii													
	3MSS.1035	concrete pouring - CPC 43 (07) - Portion A1ii	1	06-Jan-16	06-Jan-16	24.5m3						concrete pouring - CPC 43 (07) - Portion A1ii														
	CPC44 (Type 07)		6	30-Dec-15	06-Jan-16																					
	3MSS.10124	Concreting for Vertical blinding - Portion A1 ii	1	30-Dec-15	30-Dec-15							Concreting for Vertical blinding - Portion A1 ii														
	3MSS.10125	Strip formwork - Portion A1ii	1	31-Dec-15	31-Dec-15							Strip formwork - Portion A1ii														
	3MSS.10126	Install waterproofing - Portion A1ii	1	02-Jan-16	02-Jan-16							Install waterproofing - Portion A1ii														
	3MSS.10127	Backfill - Portion A1ii	1	04-Jan-16	04-Jan-16							Backfill - Portion A1ii														
	3MSS.1019	Rebar Installation - CPC 44 (07) - Portion A1ii	1	05-Jan-16	05-Jan-16	22.05T	5 men @ 0.9T/man/day						Rebar Installation - CPC 44 (07) - Portion A1ii													
<div>Forecast Bar</div> <div>Milestone</div>																										

Milestone

Page 2 of 11

</

Activity ID	Activity Name	Duration	Start	Finish	Quants	Production rates	December					January				February				March				n							
							29	06	13	20	27	03	10	17	24	31	07	14	21	28	06	13	20	27	7						
	3MSS.1033	concrete pouring - CPC 44 (07) - Portion A1ii	1	06-Jan-16	06-Jan-16	24.5m3							concrete pouring - CPC 44 (07) - Portion A1ii																		
	CPC42-2 (Type 03)		21	16-Dec-15 A	13-Jan-16								Excavation works for Pile - CPC 42-2 (03) - Portion A1ii																		
	3MSS.1016	Excavation works for Pile - CPC 42-2 (03) - Portion A1ii	12	16-Dec-15 A	02-Jan-16	14.34m3	1 machine @ 190m3/day						Excavation works for Pile - CPC 42-2 (03) - Portion A1ii																		
	3MSS.10161	Breakdown Pile(s) - Portion A1ii	1	02-Jan-16	04-Jan-16								Breakdown Pile(s) - Portion A1ii																		
	3MSS.10162	Horizontal Blinding layer - Portion A1ii	1	04-Jan-16	05-Jan-16								Horizontal Blinding layer - Portion A1ii																		
	3MSS.10163	Formwork for Vertical blinding - Portion A1i	1	05-Jan-16	06-Jan-16								Formwork for Vertical blinding - Portion A1i																		
	3MSS.10164	Concreting for Vertical blinding - Portion A1 ii	1	06-Jan-16	07-Jan-16								Concreting for Vertical blinding - Portion A1 ii																		
	3MSS.10165	Strip formwork - Portion A1ii	1	07-Jan-16	08-Jan-16								Strip formwork - Portion A1ii																		
	3MSS.10166	Install waterproofing - Portion A1ii	1	08-Jan-16	09-Jan-16								Install waterproofing - Portion A1ii																		
	3MSS.10167	Backfill - Portion A1ii	1	09-Jan-16	11-Jan-16								Backfill - Portion A1ii																		
	3MSS.1023	Rebar Installation - CPC 42-2 (03) - Portion A1ii	1	11-Jan-16	12-Jan-16	12.90T	5 men @ 0.9T/man/day						Rebar Installation - CPC 42-2 (03) - Portion A1ii																		
	3MSS.1037	concrete pouring - CPC 42-2 (03) - Portion A1ii	1	12-Jan-16	13-Jan-16	14.34m3							concrete pouring - CPC 42-2 (03) - Portion A1ii																		
	CPC49 (Type 02)		10	02-Jan-16	14-Jan-16								Excavation works for Pile - CPC 49 (02) - Portion A1ii																		
	3MSS.1039	Excavation works for Pile - CPC 49 (02) - Portion A1ii	1	02-Jan-16	04-Jan-16	5.6m3	1 machine @ 190m3/day						Excavation works for Pile - CPC 49 (02) - Portion A1ii																		
	3MSS.10391	Breakdown Pile(s) - Portion A1ii	1	04-Jan-16	05-Jan-16								Breakdown Pile(s) - Portion A1ii																		
	3MSS.10392	Horizontal Blinding layer - Portion A1ii	1	05-Jan-16	06-Jan-16								Horizontal Blinding layer - Portion A1ii																		
	3MSS.10393	Formwork for Vertical blinding - Portion A1i	1	06-Jan-16	07-Jan-16								Formwork for Vertical blinding - Portion A1i																		
	3MSS.10394	Concreting for Vertical blinding - Portion A1 ii	1	07-Jan-16	08-Jan-16								Concreting for Vertical blinding - Portion A1 ii																		
	3MSS.10395	Strip formwork - Portion A1ii	1	08-Jan-16	09-Jan-16								Strip formwork - Portion A1ii																		
	3MSS.10396	Install waterproofing - Portion A1ii	1	09-Jan-16	11-Jan-16								Install waterproofing - Portion A1ii																		
	3MSS.10397	Backfill - Portion A1ii	1	11-Jan-16	12-Jan-16								Backfill - Portion A1ii																		
	3MSS.1046	Rebar Installation - CPC 49 (02) - Portion A1ii	1	12-Jan-16	13-Jan-16	5.04T	5 men @ 0.9T/man/day						Rebar Installation - CPC 49 (02) - Portion A1ii																		
	3MSS.1060	Concrete Pouring - CPC 49 (02) - Portion A1ii	1	13-Jan-16	14-Jan-16	5.6m3							Concrete Pouring - CPC 49 (02) - Portion A1ii																		
	CPC50 (Type 02)		10	04-Jan-16	15-Jan-16								Excavation works for Pile - CPC 50 (02) - Portion A1ii																		
	3MSS.1040	Excavation works for Pile - CPC 50 (02) - Portion A1ii	1	04-Jan-16	05-Jan-16	5.6m3	1 machine @ 190m3/day						Excavation works for Pile - CPC 50 (02) - Portion A1ii																		
	3MSS.10401	Breakdown Pile(s) - Portion A1ii	1	05-Jan-16	06-Jan-16								Breakdown Pile(s) - Portion A1ii																		
	3MSS.10402	Horizontal Blinding layer - Portion A1ii	1	06-Jan-16	07-Jan-16								Horizontal Blinding layer - Portion A1ii																		
	3MSS.10403	Formwork for Vertical blinding - Portion A1i	1	07-Jan-16	08-Jan-16								Formwork for Vertical blinding - Portion A1i																		
	3MSS.10404	Concreting for Vertical blinding - Portion A1 ii	1	08-Jan-16	09-Jan-16								Concreting for Vertical blinding - Portion A1 ii																		
	3MSS.10405	Strip formwork - Portion A1ii	1	09-Jan-16	11-Jan-16								Strip formwork - Portion A1ii																		
	3MSS.10406	Install waterproofing - Portion A1ii	1	11-Jan-16	12-Jan-16								Install waterproofing - Portion A1ii																		
	3MSS.10407	Backfill - Portion A1ii	1	12-Jan-16	13-Jan-16								Backfill - Portion A1ii																		
	3MSS.1047	Rebar Installation - CPC 50 (02) - Portion A1ii	1	13-Jan-16	14-Jan-16	5.04T	5 men @ 0.9T/man/day						Rebar Installation - CPC 50 (02) - Portion A1ii																		
	3MSS.1061	Concrete Pouring - CPC 50 (02) - Portion A1ii	1	14-Jan-16	15-Jan-16	5.6m3							Concrete Pouring - CPC 50 (02) - Portion A1ii																		
	Portion A2		13	05-Jan-16	20-Jan-16								Excavation works for Pile - PC 05 (03) - Portion A2																		
	PC05 (Type 03)		10	05-Jan-16	16-Jan-16								Excavation works for Pile - PC 05 (03) - Portion A2																		
	3MSS.1041	Excavation works for Pile - PC 05 (03) - Portion A2	1	05-Jan-16	06-Jan-16	14.34m3	1 machine @ 190m3/day						Excavation works for Pile - PC 05 (03) - Portion A2																		
	3MSS.10411	Breakdown Pile(s)- Portion A2	1	06-Jan-16	07-Jan-16								Breakdown Pile(s)- Portion A2																		
	3MSS.10412	Horizontal Blinding layer - Portion A2	1	07-Jan-16	08-Jan-16								Horizontal Blinding layer - Portion A2																		
	3MSS.10413	Formwork for Vertical blinding - Portion A2	1	08-Jan-16	09-Jan-16								Formwork for Vertical blinding - Portion A2																		
	3MSS.10414	Concreting for Vertical blinding - Portion A2	1	09-Jan-16	11-Jan-16								Concreting for Vertical blinding - Portion A2																		
	3MSS.10415	Strip formwork - Portion A2	1	11-Jan-16	12-Jan-16								Strip formwork - Portion A2																		
	3MSS.10416	Install waterproofing - Portion A2	1	12-Jan-16	13-Jan-16								Install waterproofing - Portion A2																		
	3MSS.10417	Backfill - Portion A2	1	13-Jan-16	14-Jan-16								Backfill - Portion A2																		
	3MSS.1048	Rebar Installation - PC 05 (03) - Portion A2	1	14-Jan-16	15-Jan-16	12.9T	5 men @ 0.9T/man/day						Rebar Installation - PC 05 (03) - Portion A2																		
	3MSS.1062	Concrete Pouring - PC 05 (03) - Portion A2	1	15-Jan-16	16-Jan-16	14.34m3							Concrete Pouring - PC 05 (03) - Portion A2																		
	PC06 (Type 04)		10	06-Jan-16	18-Jan-16								Excavation works for Pile - PC 06 (04) - Portion A2																		
	3MSS.1043	Excavation works for Pile - PC 06 (04) - Portion A2	1	06-Jan-16	07-Jan-16	15.68m3	1 machine @ 190m3/day						Excavation works for Pile - PC 06 (04) - Portion A2																		
	3MSS.10431	Breakdown Pile(s) - Portion A2	1	07-Jan-16	08-Jan-16								Breakdown Pile(s) - Portion A2																		
	3MSS.10432	Horizontal Blinding layer - Portion A2	1	08-Jan-16	09-Jan-16								Horizontal Blinding layer - Portion A2																		
	3MSS.10433	Formwork for Vertical blinding - Portion A2	1	09-Jan-16	11-Jan-16								Formwork for Vertical blinding - Portion A2																		
	3MSS.10434	Concreting for Vertical blinding - Portion A2	1	11-Jan-16	12-Jan-16								Concreting for Vertical blinding - Portion A2																		
	3MSS.10435	Strip formwork - Portion A2	1	12-Jan-16	13-Jan-16								Strip formwork - Portion A2																		
	3MSS.10436	Install waterproofing - Portion A2	1	13-Jan-16	14-Jan-16								Install waterproofing - Portion A2																		
	3MSS.10437	Backfill - Portion A2	1	14-Jan-16	15-Jan-16								Backfill - Portion A2																		
	3MSS.1050	Rebar Installation - PC 06 (04) - Portion A2	1	15-Jan-16	16-Jan-16	14.11T	5 men @ 0.9T/man/day						Rebar Installation - PC 06 (04) - Portion A2																		
	3MSS.1064	Concrete Pouring - PC 06 (04) - Portion A2	1	16-Jan-16	18-Jan-16	15.68m3							Concrete Pouring - PC 06 (04) - Portion A2																		
	PC07 (Type 04)		10	07-Jan-16	19-Jan-16								Excavation works for Pile - PC 07 (04) - Portion A2																		
	3MSS.1044	Excavation works for Pile - PC 07 (04) - Portion A2	1	07-Jan-16	08-Jan-16	15.68m3	1 machine @ 190m3/day						Excavation works for Pile - PC 07 (04) - Portion A2																		
	3MSS.10441	Breakdown Pile(s) - Portion A2	1	08-Jan-16	09-Jan-16								Breakdown Pile(s) - Portion A2																		
	3MSS.10442	Horizontal Blinding layer - Portion A2	1	09-Jan-16	11-Jan-16								Horizontal Blinding layer - Portion A2																		
	3MSS.10443	Formwork for Vertical blinding - Portion A2	1	11-Jan-16	12-Jan-16								Formwork for Vertical blinding - Portion A2																		
	3MSS.10444	Concreting for Vertical blinding - Portion A2	1	12-Jan-16	13-Jan-16								Concreting for Vertical blinding -																		

 Forecast Bar  
 Milestone

M+ 3 Months Rolling Programme  
3MRP Rev B (2nd draft)  
Main Works Contract for M+ Museum Project

Date	Revision	Checked	Approved
02-Dec-15	3MRP Rev B (1st Draft)	Edgar / Chris	Leo Harnett
31-Dec-15	3MRP Rev B (2nd Draft)	Den / Chris	Leo Harnett

Activity ID	Activity Name	Duration	Start	Finish	Quants	Production rates	December					January				February				March				n
							3					4				5				6				
							29	06	13	20	27	03	10	17	24	31	07	14	21	28	06	13	20	
PC08 (Type 02)																								7
3MSS.1042	Excavation works for Pile - PC 08 (02) - Portion A2	1	08-Jan-16	20-Jan-16	5.6m3	1 machine @ 190m3/day						Excavation works for Pile - PC 08 (02) - Portion A2												
3MSS.10421	Breakdown Pile(s) - Portion A2	1	09-Jan-16	11-Jan-16								Breakdown Pile(s) - Portion A2												
3MSS.10422	Horizontal Blinding layer - Portion A2	1	11-Jan-16	12-Jan-16								Horizontal Blinding layer - Portion A2												
3MSS.10423	Formwork for Vertical blinding - Portion A2	1	12-Jan-16	13-Jan-16								Formwork for Vertical blinding - Portion A2												
3MSS.10424	Concreting for Vertical blinding - Portion A2	1	13-Jan-16	14-Jan-16								Concreting for Vertical blinding - Portion A2												
3MSS.10425	Strip formwork - Portion A2	1	14-Jan-16	15-Jan-16								Strip formwork - Portion A2												
3MSS.10426	Install waterproofing - Portion A2	1	15-Jan-16	16-Jan-16								Install waterproofing - Portion A2												
3MSS.10427	Backfill - Portion A2	1	16-Jan-16	18-Jan-16								Backfill - Portion A2												
3MSS.1049	Rebar Installations - PC 08 (02) - Portion A2	1	18-Jan-16	19-Jan-16	5.04T	5 men @ 0.9T/man/day						Rebar Installations - PC 08 (02) - Portion A2												
3MSS.1063	Concrete Pouring - PC 08 (02) - Portion A2	1	19-Jan-16	20-Jan-16	5.6m3							Concrete Pouring - PC 08 (02) - Portion A2												
Portion A3																								
PC18 (Type 01)																								
3MSS.1071	Excavation works for Pile - PC 18 (01) - Portion A3	1	09-Jan-16	11-Jan-16	2m3	1 machine @ 190m3/day						Excavation works for Pile - PC 18 (01) - Portion A3												
3MSS.10711	Breakdown Pile(s) - Portion A3	1	11-Jan-16	12-Jan-16								Breakdown Pile(s) - Portion A3												
3MSS.10712	Horizontal Blinding layer - Portion A3	1	12-Jan-16	13-Jan-16								Horizontal Blinding layer - Portion A3												
3MSS.10713	Formwork for Vertical blinding - Portion A3	1	13-Jan-16	14-Jan-16								Formwork for Vertical blinding - Portion A3												
3MSS.10714	Concreting for Vertical blinding - Portion A3	1	14-Jan-16	15-Jan-16								Concreting for Vertical blinding - Portion A3												
3MSS.10715	Strip formwork - Portion A3	1	15-Jan-16	16-Jan-16								Strip formwork - Portion A3												
3MSS.10716	Install waterproofing - Portion A3	1	16-Jan-16	18-Jan-16								Install waterproofing - Portion A3												
3MSS.10717	Backfill - Portion A3	1	18-Jan-16	19-Jan-16								Backfill - Portion A3												
3MSS.1079	Rebar /Earthing Installation - PC 18 (01) - Portion A3	1	19-Jan-16	20-Jan-16	1.8T							Rebar /Earthing Installation - PC 18 (01) - Portion A3												
3MSS.1094	Concrete Pouring - PC 18 (01) - Portion A3	1	20-Jan-16	21-Jan-16	2m3							Concrete Pouring - PC 18 (01) - Portion A3												
PC19 (Type 02)																								
3MSS.1070	Excavation works for Pile - PC 19 (02) - Portion A3	1	11-Jan-16	12-Jan-16	5.6m3	1 machine @ 190m3/day						Excavation works for Pile - PC 19 (02) - Portion A3												
3MSS.10701	Breakdown Pile(s) - Portion A3	1	12-Jan-16	13-Jan-16								Breakdown Pile(s) - Portion A3												
3MSS.10702	Horizontal Blinding layer - Portion A3	1	13-Jan-16	14-Jan-16								Horizontal Blinding layer - Portion A3												
3MSS.10703	Formwork for Vertical blinding - Portion A3	1	14-Jan-16	15-Jan-16								Formwork for Vertical blinding - Portion A3												
3MSS.10704	Concreting for Vertical blinding - Portion A3	1	15-Jan-16	16-Jan-16								Concreting for Vertical blinding - Portion A3												
3MSS.10705	Strip formwork - Portion A3	1	16-Jan-16	18-Jan-16								Strip formwork - Portion A3												
3MSS.10706	Install waterproofing - Portion A3	1	18-Jan-16	19-Jan-16								Install waterproofing - Portion A3												
3MSS.10707	Backfill - Portion A3	1	19-Jan-16	20-Jan-16								Backfill - Portion A3												
3MSS.1078	Rebar Installation - PC 19 (02) - Portion A3	1	20-Jan-16	21-Jan-16	5.04T							Rebar Installation - PC 19 (02) - Portion A3												
3MSS.1093	Concrete Pouring - PC 19 (02) - Portion A3	1	21-Jan-16	22-Jan-16	5.6m3							Concrete Pouring - PC 19 (02) - Portion A3												
PC20 (Type 07)																								
3MSS.1069	Excavation works for Pile - PC 20 (07) - Portion A3	1	12-Jan-16	13-Jan-16	25m3	1 machine @ 190m3/day						Excavation works for Pile - PC 20 (07) - Portion A3												
3MSS.10691	Breakdown Pile(s) - Portion A3	1	13-Jan-16	14-Jan-16								Breakdown Pile(s) - Portion A3												
3MSS.10692	Horizontal Blinding layer - Portion A3	1	14-Jan-16	15-Jan-16								Horizontal Blinding layer - Portion A3												
3MSS.10693	Formwork for Vertical blinding - Portion A3	1	15-Jan-16	16-Jan-16								Formwork for Vertical blinding - Portion A3												
3MSS.10694	Concreting for Vertical blinding - Portion A3	1	16-Jan-16	18-Jan-16								Concreting for Vertical blinding - Portion A3												
3MSS.10695	Strip formwork - Portion A3	1	18-Jan-16	19-Jan-16								Strip formwork - Portion A3												
3MSS.10696	Install waterproofing - Portion A3	1	19-Jan-16	20-Jan-16								Install waterproofing - Portion A3												
3MSS.10697	Backfill - Portion A3	1	20-Jan-16	21-Jan-16								Backfill - Portion A3												
3MSS.1077	Rebar Installation - PC 20 (07) - Portion A3	5	21-Jan-16	27-Jan-16	22.05T							Rebar Installation - PC 20 (07) - Portion A3												
3MSS.1092	Concrete Pouring - PC 20 (07) - Portion A3	1	27-Jan-16	28-Jan-16	25m3							Concrete Pouring - PC 20 (07) - Portion A3												
PC21 (Type 02)																								
3MSS.1067	Excavation works for Pile - PC 21 (02) - Portion A3	1	12-Jan-16	13-Jan-16	5.6m3	1 machine @ 190m3/day						Excavation works for Pile - PC 21 (02) - Portion A3												
3MSS.10671	Breakdown Pile(s) - Portion A3	1	13-Jan-16	14-Jan-16								Breakdown Pile(s) - Portion A3												
3MSS.10672	Horizontal Blinding layer - Portion A3	1	14-Jan-16	15-Jan-16								Horizontal Blinding layer - Portion A3												
3MSS.10673	Formwork for Vertical blinding - Portion A3	1	15-Jan-16	16-Jan-16								Formwork for Vertical blinding - Portion A3												
3MSS.10674	Concreting for Vertical blinding - Portion A3	1	16-Jan-16	18-Jan-16								Concreting for Vertical blinding - Portion A3												
3MSS.10675	Strip formwork - Portion A3	1	18-Jan-16	19-Jan-16								Strip formwork - Portion A3												
3MSS.10676	Install waterproofing - Portion A3	1	19-Jan-16	20-Jan-16								Install waterproofing - Portion A3												
3MSS.10677	Backfill - Portion A3	1	20-Jan-16	21-Jan-16								Backfill - Portion A3												
3MSS.1074	Rebar /Earthing Installation - PC 21 (02) - Portion A3	1	21-Jan-16	22-Jan-16	5.04T							Rebar /Earthing Installation - PC 21 (02) - Portion A3												
3MSS.1090	Concrete Pouring - PC 21 (02) - Portion A3	1	22-Jan-16	23-Jan-16	5.6m3							Concrete Pouring - PC 21 (02) - Portion A3												
PC31 (Type 01)																								
3MSS.1201	Excavation works for Pile - PC 31 (01) - Portion A3	1	13-Jan-16	14-Jan-16	2m3	1 machine @ 190m3/day						Excavation works for Pile - PC 31 (01) - Portion A3												
3MSS.12011	Breakdown Pile(s) - Portion A3	1	14-Jan-16	15-Jan-16								Breakdown Pile(s) - Portion A3												
3MSS.12012	Horizontal Blinding layer - Portion A3	1	15-Jan-16	16-Jan-16								Horizontal Blinding layer - Portion A3												
3MSS.12013	Formwork for Vertical blinding - Portion A3	1	16-Jan-16	18-Jan-16								Formwork for Vertical blinding - Portion A3												
3MSS.12014	Concreting for Vertical blinding - Portion A3	1	18-Jan-16	19-Jan-16								Concreting for Vertical blinding - Portion A3												
3MSS.12015	Strip formwork - Portion A3	1	19-Jan-16	20-Jan-16								Strip formwork - Portion A3												
3MSS.12016	Install waterproofing - Portion A3	1	20-Jan-16	21-Jan-16								Install waterproofing - Portion A3												
3MSS.12017	Backfill - Portion A3	1	21-Jan-16	22-Jan-16								Backfill - Portion A3												
3MSS.1202	Rebar Installation - PC 31 (01) - Portion A3	1	22-Jan-16	23-Jan-16	1.8T	5 men @ 0.9T/man/day						Rebar Installation - PC 31 (01) - Portion A3												
3MSS.1225	Concrete pouring - PC 31 (01) - Portion A3	1	23-Jan-16	23-Jan-16	2m3							Concrete pouring - PC 31 (01) - Portion A3												
PC32 (Type 01)																								



Activity ID	Activity Name	Duration	Start	Finish	Quants	Production rates	December					January				February				March				n		
							3					4				5				6						
							29	06	13	20	27	03	10	17	24	31	07	14	21	28	06	13	20	27	7	
	3MSS.1179	Excavation works for Pile - PC 32 (01) - Portion A3	1	14-Jan-16	15-Jan-16	2m3	1 machine @ 190m3/day																			
	3MSS.11791	Breakdown Pile(s) - Portion A3	1	15-Jan-16	16-Jan-16																					
	3MSS.11792	Horizontal Blinding layer - Portion A3	1	16-Jan-16	18-Jan-16																					
	3MSS.11793	Formwork for Vertical blinding - Portion A3	1	18-Jan-16	19-Jan-16																					
	3MSS.11794	Concreting for Vertical blinding - Portion A3	1	19-Jan-16	20-Jan-16																					
	3MSS.11795	Strip formwork - Portion A3	1	20-Jan-16	21-Jan-16																					
	3MSS.11796	Install waterproofing - Portion A3	1	21-Jan-16	22-Jan-16																					
	3MSS.11797	Backfill - Portion A3	1	22-Jan-16	23-Jan-16																					
	3MSS.1194	Rebar Installation - PC 32 (01) - Portion A3	1	23-Jan-16	23-Jan-16	1.8T	5 men @ 0.9T/man/day																			
	3MSS.1224	Concrete pouring - PC 32 (01) - Portion A3	1	23-Jan-16	25-Jan-16	2m3																				
	PC33 (Type 02)		10	15-Jan-16	27-Jan-16																					
	3MSS.1068	Excavation works for Pile - PC 33 (02) - Portion A3	1	15-Jan-16	16-Jan-16	5.6m3	1 machine @ 190m3/day																			
	3MSS.10681	Breakdown Pile(s) - Portion A3	1	16-Jan-16	18-Jan-16																					
	3MSS.10682	Horizontal Blinding layer - Portion A3	1	18-Jan-16	19-Jan-16																					
	3MSS.10683	Formwork for Vertical blinding - Portion A3	1	19-Jan-16	20-Jan-16																					
	3MSS.10684	Concreting for Vertical blinding - Portion A3	1	20-Jan-16	21-Jan-16																					
	3MSS.10685	Strip formwork - Portion A3	1	21-Jan-16	22-Jan-16																					
	3MSS.10686	Install waterproofing - Portion A3	1	22-Jan-16	23-Jan-16																					
	3MSS.10687	Backfill - Portion A3	1	23-Jan-16	25-Jan-16																					
	3MSS.1076	Rebar Installation - PC 33 (02) - Portion A3	1	25-Jan-16	26-Jan-16	5.04T	5 men @ 0.9T/man/day																			
	3MSS.1091	Concrete Pouring - PC 33 (02) - Portion A3	1	26-Jan-16	27-Jan-16	5.6m3																				
	PC44 (Type 02)		12	15-Jan-16	29-Jan-16																					
	3MSS.1176	Excavation works for Pile - PC 44 (02) - Portion A3	1	15-Jan-16	16-Jan-16	5.6m3	1 machine @ 190m3/day																			
	3MSS.11761	Breakdown Pile(s) - Portion A3	1	16-Jan-16	18-Jan-16																					
	3MSS.11762	Horizontal Blinding layer - Portion A3	1	18-Jan-16	19-Jan-16																					
	3MSS.11763	Formwork for Vertical blinding - Portion A3	1	19-Jan-16	20-Jan-16																					
	3MSS.11764	Concreting for Vertical blinding - Portion A3	1	20-Jan-16	21-Jan-16																					
	3MSS.11765	Strip formwork - Portion A3	1	21-Jan-16	22-Jan-16																					
	3MSS.11766	Install waterproofing - Portion A3	1	22-Jan-16	23-Jan-16																					
	3MSS.11767	Backfill - Portion A3	1	23-Jan-16	25-Jan-16																					
	3MSS.1191	Rebar Installation -PC 44 (02) - Portion A3	3	25-Jan-16	28-Jan-16	5.04T	5 men @ 0.9T/man/day																			
	3MSS.1221	Concrete pouring - PC 44 (02) - Portion A3	1	28-Jan-16	29-Jan-16	5.6m3																				
	Manhole(Type 1,25,19,38,2,14) - Portion A		24	07-Jan-16	03-Feb-16																					
	Type 25		4	07-Jan-16	11-Jan-16																					
	3MSS.1104	Excavation (Type 25) - GL 6'7"-D'E' - Portion A1i	1	07-Jan-16	07-Jan-16	5m3	1 machine @ 190m3/day																			
	3MSS.1105	Rebar Installation(Type 25) - GL 6'7"-D'E' - Portion A1i	1	08-Jan-16	08-Jan-16																					
	3MSS.1106	Formworks (Type 25) - GL 6'7"-D'E' - Portion A1i	1	09-Jan-16	09-Jan-16																					
	3MSS.1107	Concrete Pouring (Type 25) - GL 6'7"-D'E' - Portion A1i	1	11-Jan-16	11-Jan-16																					
	Type 1		4	08-Jan-16	12-Jan-16																					
	3MSS.1100	Excavation (Type 1) - GL 6'7"-D'E' - Portion A1i	1	08-Jan-16	08-Jan-16	5m3	1 machine @ 190m3/day																			
	3MSS.1101	Rebar Installation (Type 1) - GL 6'7"-D'E' - Portion A1i	1	09-Jan-16	09-Jan-16																					
	3MSS.1102	Formworks (Type 1) - GL 6'7"-D'E' - Portion A1i	1	11-Jan-16	11-Jan-16																					
	3MSS.1103	Concrete Pouring (Type 1) - GL 6'7"-D'E' - Portion A1i	1	12-Jan-16	12-Jan-16																					
	Type 19		3	19-Jan-16	22-Jan-16																					
	3MSS.1108	Excavation (Type 19) - GL 7'-1/D-'E' - Portion A2	1	19-Jan-16	20-Jan-16	5m3	1 machine @ 190m3/day																			
	3MSS.1109	Rebar Installation (Type 19) - GL 7'-1/D-'E' - Portion A2	1	20-Jan-16	21-Jan-16																					
	3MSS.1110	Formworks (Type 19) - GL 7'-1/D-'E' - Portion A2	1	21-Jan-16	22-Jan-16																					
	3MSS.1111	Concrete Pouring (Type 19) - GL 7'-1/D-'E' - Portion A2	0	22-Jan-16	22-Jan-16																					
	Type 38		3	20-Jan-16	23-Jan-16																					
	3MSS.1112	Excavation (Type 38) - GL 1/C-'D' - Portion A2	1	20-Jan-16	21-Jan-16	5m3	1 machine @ 190m3/day																			
3MSS.1113	Rebar Installation (Type 38) - GL 1/C-'D' - Portion A2	1	21-Jan-16	22-Jan-16																						
3MSS.1114	Formworks (Type 38) - GL 1/C-'D' - Portion A2	1	22-Jan-16	23-Jan-16																						
3MSS.1115	Concrete Pouring (Type 38) - GL 1/C-'D' - Portion A2	0	23-Jan-16	23-Jan-16																						
Type 2		4	28-Jan-16	02-Feb-16																						
3MSS.1116	Excavation (Type 2) - GL 2/D-'E' - Portion A3																									

█ Forecast Bar  
◆ Milestone

M+ 3 Months Rolling Programme  
3MRP Rev B (2nd draft)  
Main Works Contract for M+ Museum Project

Date
------

Activity ID	Activity Name	Duration	Start	Finish	Quants	Production rates	December					January				February				March			
							29	06	13	20	27	03	10	17	24	31	07	14	21	28	06	13	20
Stage 1 - Pile Cap Construction (Area B)																							
Portion B1																							
PCT2 (Type S1)																							
3MSS.11332	Horizontal Blinding layer - Portion B1	1	31-Dec-15	02-Jan-16								Horizontal Blinding layer - Portion B1											
3MSS.11333	Formwork for Vertical blinding - Portion B1	1	02-Jan-16	04-Jan-16								Formwork for Vertical blinding - Portion B1											
3MSS.11334	Concreting for Vertical blinding - Portion B1	1	04-Jan-16	05-Jan-16								Concreting for Vertical blinding - Portion B1											
3MSS.11335	Strip formwork - Portion B1	1	05-Jan-16	06-Jan-16								Strip formwork - Portion B1											
3MSS.11336	Install waterproofing - Portion B1	1	06-Jan-16	07-Jan-16								Install waterproofing - Portion B1											
3MSS.11337	Backfill - Portion B1	1	07-Jan-16	08-Jan-16								Backfill - Portion B1											
3MSS.1138	Rebar Installation - PC 72 - 33% (s1) - Portion B1	20	08-Jan-16	01-Feb-16	341T	10 men @ 0.9T/man/day						Rebar Installation - PC 72 - 33% (s1) - Portion B1											
3MSS.1148	concrete pouring - PC 72 - 33% (s1) - Portion B1	1	01-Feb-16	02-Feb-16	380m3							concrete pouring - PC 72 - 33% (s1) - Portion B1											
Portion B2																							
PC59 (Type 02)																							
3MSS.1135	Excavation works for Pile - PC 59 (02) - Portion B2	4	29-Dec-15 A	02-Jan-16	5.6m3	1 machine @ 190m3/day						Excavation works for Pile - PC 59 (02) - Portion B2											
3MSS.11351	Breakdown Pile(s) - Portion B2	4	30-Dec-15 A	04-Jan-16								Breakdown Pile(s) - Portion B2											
3MSS.11352	Horizontal Blinding layer - Portion B2	1	04-Jan-16	05-Jan-16								Horizontal Blinding layer - Portion B2											
3MSS.11353	Formwork for Vertical blinding - Portion B2	1	05-Jan-16	06-Jan-16								Formwork for Vertical blinding - Portion B2											
3MSS.11354	Concreting for Vertical blinding - Portion B2	1	06-Jan-16	07-Jan-16								Concreting for Vertical blinding - Portion B2											
3MSS.11355	Strip formwork - Portion B2	1	07-Jan-16	08-Jan-16								Strip formwork - Portion B2											
3MSS.11356	Install waterproofing - Portion B2	1	08-Jan-16	09-Jan-16								Install waterproofing - Portion B2											
3MSS.11357	Backfill - Portion B2	1	09-Jan-16	11-Jan-16								Backfill - Portion B2											
3MSS.1140	Rebar /Earthing Installation-PC 59 (02) - Portion B2	1	11-Jan-16	12-Jan-16	5.04T							Rebar /Earthing Installation-PC 59 (02) - Portion B2											
3MSS.1150	concrete pouring - PC 59 (02) - Portion B2	1	12-Jan-16	13-Jan-16	5.6m3							concrete pouring - PC 59 (02) - Portion B2											
PC60 (Type 02)																							
3MSS.1153	Excavation works for Pile - PC 60 (02) - Portion B2	5	29-Dec-15 A	04-Jan-16	5.6m3	1 machine @ 190m3/day						Excavation works for Pile - PC 60 (02) - Portion B2											
3MSS.11531	Breakdown Pile(s) - Portion B2	5	29-Dec-15 A	05-Jan-16								Breakdown Pile(s) - Portion B2											
3MSS.11532	Horizontal Blinding layer - Portion B2	1	05-Jan-16	06-Jan-16								Horizontal Blinding layer - Portion B2											
3MSS.11533	Formwork for Vertical blinding - Portion B2	1	06-Jan-16	07-Jan-16								Formwork for Vertical blinding - Portion B2											
3MSS.11534	Concreting for Vertical blinding - Portion B2	1	07-Jan-16	08-Jan-16								Concreting for Vertical blinding - Portion B2											
3MSS.11535	Strip formwork - Portion B2	1	08-Jan-16	09-Jan-16								Strip formwork - Portion B2											
3MSS.11536	Install waterproofing - Portion B2	1	09-Jan-16	11-Jan-16								Install waterproofing - Portion B2											
3MSS.11537	Backfill - Portion B2	1	11-Jan-16	12-Jan-16								Backfill - Portion B2											
3MSS.1157	Rebar Installation - PC 60 (02) - Portion B2	1	12-Jan-16	13-Jan-16	5.04T	5 men @ 0.9T/man/day						Rebar Installation - PC 60 (02) - Portion B2											
3MSS.1165	concrete pouring - PC 60 (02) - Portion B2	1	13-Jan-16	14-Jan-16	5.6m3							concrete pouring - PC 60 (02) - Portion B2											
PC61 (Type 02)																							
3MSS.1170	Excavation works for Pile - PC 61 (02) - Portion B2	5	29-Dec-15 A	05-Jan-16	5.6m3	1 machine @ 190m3/day						Excavation works for Pile - PC 61 (02) - Portion B2											
3MSS.11701	Breakdown Pile(s) - Portion B2	1	05-Jan-16	06-Jan-16								Breakdown Pile(s) - Portion B2											
3MSS.11702	Horizontal Blinding layer - Portion B2	1	06-Jan-16	07-Jan-16								Horizontal Blinding layer - Portion B2											
3MSS.11703	Formwork for Vertical blinding - Portion B2	1	07-Jan-16	08-Jan-16								Formwork for Vertical blinding - Portion B2											
3MSS.11704	Concreting for Vertical blinding - Portion B2	1	08-Jan-16	09-Jan-16								Concreting for Vertical blinding - Portion B2											
3MSS.11705	Strip formwork - Portion B2	1	09-Jan-16	11-Jan-16								Strip formwork - Portion B2											
3MSS.11706	Install waterproofing - Portion B2	1	11-Jan-16	12-Jan-16								Install waterproofing - Portion B2											
3MSS.11707	Backfill - Portion B2	1	12-Jan-16	13-Jan-16								Backfill - Portion B2											
3MSS.1185	Rebar Installation - PC 61 (02) - Portion B2	1	13-Jan-16	13-Jan-16	5.04T	5 men @ 0.9T/man/day						Rebar Installation - PC 61 (02) - Portion B2											
3MSS.1215	Concrete pouring - PC 61 (02) - Portion B2	1	14-Jan-16	14-Jan-16	5.6m3							Concrete pouring - PC 61 (02) - Portion B2											
PC62 (Type 02)																							
3MSS.1169	Excavation works for Pile - PC 62 (02) - Portion B2	1	05-Jan-16	05-Jan-16	5.6m3	1 machine @ 190m3/day						Excavation works for Pile - PC 62 (02) - Portion B2											
3MSS.11691	Breakdown Pile(s) - Portion B2	1	06-Jan-16	06-Jan-16								Breakdown Pile(s) - Portion B2											
3MSS.11692	Horizontal Blinding layer - Portion B2	1	07-Jan-16	07-Jan-16								Horizontal Blinding layer - Portion B2											
3MSS.11693	Formwork for Vertical blinding - Portion B2	1	08-Jan-16	08-Jan-16								Formwork for Vertical blinding - Portion B2											
3MSS.11694	Concreting for Vertical blinding - Portion B2	1	09-Jan-16	09-Jan-16								Concreting for Vertical blinding - Portion B2											
3MSS.11695	Strip formwork - Portion B2	1	11-Jan-16	11-Jan-16								Strip formwork - Portion B2											
3MSS.11696	Install waterproofing - Portion B2	1	12-Jan-16	12-Jan-16								Install waterproofing - Portion B2											
3MSS.11697	Backfill - Portion B2	1	13-Jan-16	13-Jan-16								Backfill - Portion B2											
3MSS.1184	Rebar Installation - PC 62 (02) - Portion B2	1	14-Jan-16	14-Jan-16	5.04T	5 men @ 0.9T/man/day						Rebar Installation - PC 62 (02) - Portion B2											
3MSS.1214	Concrete pouring - PC 62 (02) - Portion B2	1	14-Jan-16	15-Jan-16	5.6m3							Concrete pouring - PC 62 (02) - Portion B2											
PC50 (Type 02)																							
3MSS.1136	Excavation works for Pile - PC 50 (02) - Portion B2	3	06-Jan-16	08-Jan-16	5.6m3	1 machine @ 190m3/day						Excavation works for Pile - PC 50 (02) - Portion B2											
3MSS.11361	Breakdown Pile(s) - Portion B2	1	09-Jan-16	09-Jan-16								Breakdown Pile(s) - Portion B2											
3MSS.11362	Horizontal Blinding layer - Portion B2	1	11-Jan-16	11-Jan-16								Horizontal Blinding layer - Portion B2											
3MSS.11363	Formwork for Vertical blinding - Portion B2	1	12-Jan-16	12-Jan-16								Formwork for Vertical blinding - Portion B2											
3MSS.11364	Concreting for Vertical blinding - Portion B2	1	13-Jan-16	13-Jan-16								Concreting for Vertical blinding - Portion B2											
3MSS.11365	Strip formwork - Portion B2	1	14-Jan-16	14-Jan-16								Strip formwork - Portion B2											
3MSS.11366	Install waterproofing - Portion B2	1	15-Jan-16	15-Jan-16								Install waterproofing - Portion B2											
3MSS.11367	Backfill - Portion B2	1	16-Jan-16	16-Jan-16								Backfill - Portion B2											
3MSS.1141	Rebar /Earthing Installation - PC 50 (02) - Portion B2	1	18-Jan-16	18-Jan-16	5.04T							Rebar /Earthing Installation - PC 50 (02) - Portion B2											
3MSS.1151	concrete pouring - PC 50 (02) - Portion B2	1	19-Jan-16	19-Jan-16	5.6m3							concrete pouring - PC 50 (02) - Portion B2											
PC51 (Type 02)																							

Forecast Bar

Milestone

M+ 3 Months Rolling Programme

3MRP Rev B (2nd draft)

Main Works Contract for M+ Museum Project

Page 6 of 11

Date	Revision	Checked	Approved
02-Dec-15	3MRP Rev B (1st Draft)	Edgar / Chris	Leo Harnett
31-Dec-15	3MRP Rev B (2nd Draft)	Den / Chris	Leo Harnett

Activity ID	Activity Name	Duration	Start	Finish	Quants	Production rates	December					January				February				March				n	
							3					4				5				6					
							29	06	13	20	27	03	10	17	24	31	07	14	21	28	06	13	20		27
	3MSS.1155	Excavation works for Pile - PC 51 (02) - Portion B2	1	09-Jan-16	09-Jan-16	5.6m3	1 machine @ 190m3/day																		
	3MSS.11551	Breakdown Pile(s) - Portion B2	1	09-Jan-16	11-Jan-16																				
	3MSS.11552	Horizontal Blinding layer - Portion B2	1	11-Jan-16	12-Jan-16																				
	3MSS.11553	Formwork for Vertical blinding - Portion B2	1	12-Jan-16	13-Jan-16																				
	3MSS.11554	Concreting for Vertical blinding - Portion B2	1	13-Jan-16	14-Jan-16																				
	3MSS.11555	Strip formwork - Portion B2	1	14-Jan-16	15-Jan-16																				
	3MSS.11556	Install waterproofing - Portion B2	1	15-Jan-16	16-Jan-16																				
	3MSS.11557	Backfill - Portion B2	1	16-Jan-16	18-Jan-16																				
	3MSS.1159	Rebar Installation - PC 51 (02) - Portion B2	1	18-Jan-16	19-Jan-16	5.04T	5 men @ 0.9T/man/day																		
	3MSS.1167	concrete pouring - PC 51 (02) - Portion B2	1	19-Jan-16	20-Jan-16	5.6m3																			
	PC52 (Type 02)		9	09-Jan-16	21-Jan-16																				
	3MSS.1172	Excavation works for Pile - PC 52 (02) - Portion B2	1	09-Jan-16	11-Jan-16	5.6m3	1 machine @ 190m3/day																		
	3MSS.11721	Breakdown Pile(s) - Portion B2	1	11-Jan-16	12-Jan-16																				
	3MSS.11722	Horizontal Blinding layer - Portion B2	1	12-Jan-16	13-Jan-16																				
	3MSS.11723	Formwork for Vertical blinding - Portion B2	1	13-Jan-16	14-Jan-16																				
	3MSS.11724	Concreting for Vertical blinding - Portion B2	1	14-Jan-16	15-Jan-16																				
	3MSS.11725	Strip formwork - Portion B2	1	15-Jan-16	16-Jan-16																				
	3MSS.11726	Install waterproofing - Portion B2	1	16-Jan-16	18-Jan-16																				
	3MSS.11727	Backfill - Portion B2	1	18-Jan-16	19-Jan-16																				
	3MSS.1187	Rebar Installation - PC 52 (02) - Portion B2	1	19-Jan-16	20-Jan-16	5.04T	5 men @ 0.9T/man/day																		
	3MSS.1217	Concrete pouring - PC 52 (02) - Portion B2	1	20-Jan-16	21-Jan-16	5.6m3																			
	PC53 (Type 02)		9	11-Jan-16	21-Jan-16																				
	3MSS.1171	Excavation works for Pile - PC 53 (02) - Portion B2	1	11-Jan-16	12-Jan-16	5.6m3	1 machine @ 190m3/day																		
	3MSS.11711	Breakdown Pile(s) - Portion B2	1	12-Jan-16	13-Jan-16																				
	3MSS.11712	Horizontal Blinding layer - Portion B2	1	13-Jan-16	14-Jan-16																				
	3MSS.11713	Formwork for Vertical blinding - Portion B2	1	14-Jan-16	15-Jan-16																				
	3MSS.11714	Concreting for Vertical blinding - Portion B2	1	15-Jan-16	16-Jan-16																				
	3MSS.11715	Strip formwork - Portion B2	1	16-Jan-16	18-Jan-16																				
	3MSS.11716	Install waterproofing - Portion B2	1	18-Jan-16	19-Jan-16																				
	3MSS.11717	Backfill - Portion B2	1	19-Jan-16	20-Jan-16																				
	3MSS.1186	Rebar Installation - PC 53 (02) - Portion B2	1	20-Jan-16	21-Jan-16	5.04T	5 men @ 0.9T/man/day																		
	3MSS.1216	Concrete pouring - PC 53 (02) - Portion B2	1	21-Jan-16	21-Jan-16	5.6m3																			
	PC54 (Type 02)		9	12-Jan-16	22-Jan-16																				
	3MSS.1173	Excavation works for Pile - PC 54 (02) - Portion B2	1	12-Jan-16	13-Jan-16	5.6m3	1 machine @ 190m3/day																		
	3MSS.11731	Breakdown Pile(s) - Portion B2	1	13-Jan-16	14-Jan-16																				
	3MSS.11732	Horizontal Blinding layer - Portion B2	1	14-Jan-16	15-Jan-16																				
	3MSS.11733	Formwork for Vertical blinding - Portion B2	1	15-Jan-16	16-Jan-16																				
	3MSS.11734	Concreting for Vertical blinding - Portion B2	1	16-Jan-16	18-Jan-16																				
	3MSS.11735	Strip formwork - Portion B2	1	18-Jan-16	19-Jan-16																				
	3MSS.11736	Install waterproofing - Portion B2	1	19-Jan-16	20-Jan-16																				
	3MSS.11737	Backfill - Portion B2	1	20-Jan-16	21-Jan-16																				
	3MSS.1188	Rebar Installation -PC 54 (02) - Portion B2	1	21-Jan-16	21-Jan-16	5.04T	5 men @ 0.9T/man/day																		
	3MSS.1218	Concrete pouring - PC 54 (02) - Portion B2	1	22-Jan-16	22-Jan-16	5.6m3																			
	Portion B3		33	12-Jan-16	23-Feb-16																				
	PC39 (Type 02)		12	12-Jan-16	26-Jan-16																				
	3MSS.1134	Excavation works for Pile - PC 39 (02) - Portion B3	3	12-Jan-16	15-Jan-16	5.6m3	1 machine @ 190m3/day																		
	3MSS.11341	Breakdown Pile(s) - Portion B3	1	15-Jan-16	16-Jan-16																				
	3MSS.11342	Horizontal Blinding layer - Portion B3	1	16-Jan-16	18-Jan-16																				
	3MSS.11343	Formwork for Vertical blinding - Portion B3	1	18-Jan-16	19-Jan-16																				
	3MSS.11344	Concreting for Vertical blinding - Portion B3	1	19-Jan-16	20-Jan-16																				
	3MSS.11345	Strip formwork - Portion B3	1	20-Jan-16	21-Jan-16																				
	3MSS.11346	Install waterproofing - Portion B3	1	21-Jan-16	22-Jan-16																				
	3MSS.11347	Backfill - Portion B3	1	22-Jan-16	23-Jan-16																				
	3MSS.1139	Rebar /Earthing Installation - PC 39 (02) - Portion B3	1	23-Jan-16	25-Jan-16	5.04T																			
	3MSS.1149	concrete pouring - PC 39 (02) - Portion B3	1	25-Jan-16	26-Jan-16	5.6m3																			
	PC40 (Type 07)		16	12-Jan-16	29-Jan-16																				
	3MSS.1154	Excavation works for Pile - PC 40 (07) - Portion B3	2	12-Jan-16	13-Jan-16	24.5m3	1 machine @ 190m3/day																		
	3MSS.11541	Breakdown Pile(s) - Portion B3	1	14-Jan-16	14-Jan-16																				
	3MSS.11542	Horizontal Blinding layer - Portion B3	1	15-Jan-16	15-Jan-16																				
	3MSS.11543	Formwork for Vertical blinding - Portion B3	1	16-Jan-16	16-Jan-16																				
	3MSS.11544	Concreting for Vertical blinding - Portion B3	1	18-Jan-16	18-Jan-16																				
	3MSS.11545	Strip formwork - Portion B3	1	19-Jan-16	19-Jan-16																				
	3MSS.11546	Install waterproofing - Portion B3	1	20-Jan-16	20-Jan-16																		</		

 Forecast Bar  
 Milestone

M+ 3 Months Rolling Programme  
3MRP Rev B (2nd draft)  
Main Works Contract for M+ Museum Project

Date	Revision	Checked	Approved
02-Dec-15	3MRP Rev B (1st Draft)	Edgar / Chris	Leo Harnett
31-Dec-15	3MRP Rev B (2nd Draft)	Den / Chris	Leo Harnett



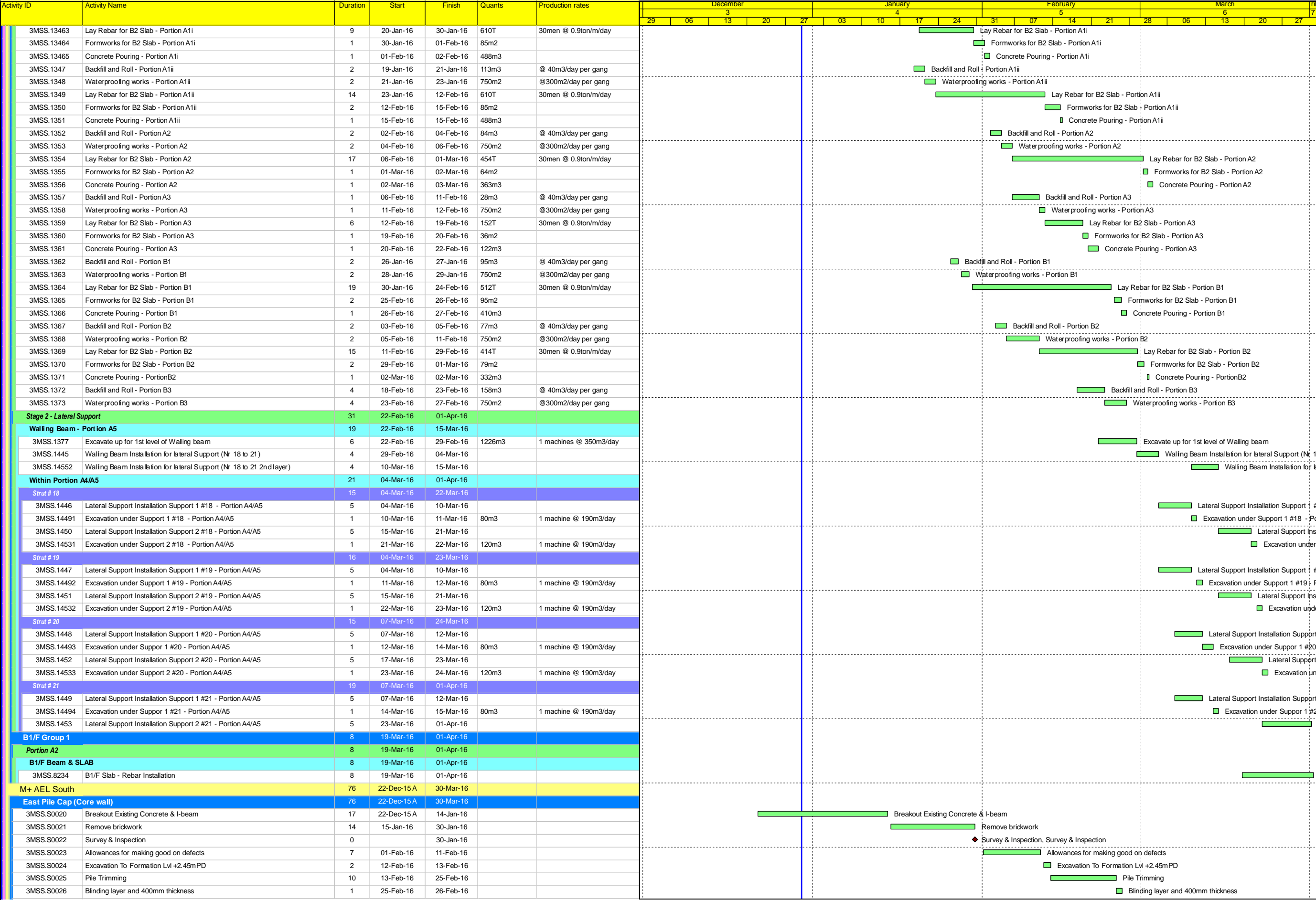
Activity ID	Activity Name	Duration	Start	Finish	Quants	Production rates	December					January				February				March					n	
							3					4				5				6						
							29	06	13	20	27	03	10	17	24	31	07	14	21	28	06	13	20	27		
	3MSS.11741 Breakdown Pile(s) - Portion B3	1	15-Jan-16	16-Jan-16																						
	3MSS.11742 Horizontal Blinding layer - Portion B3	1	16-Jan-16	18-Jan-16																						
	3MSS.11743 Formwork for Vertical blinding - Portion B3	1	18-Jan-16	19-Jan-16																						
	3MSS.11744 Concreting for Vertical blinding - Portion B3	1	19-Jan-16	20-Jan-16																						
	3MSS.11745 Strip formwork - Portion B3	1	20-Jan-16	21-Jan-16																						
	3MSS.11746 Install waterproofing - Portion B3	1	21-Jan-16	22-Jan-16																						
	3MSS.11747 Backfill - Portion B3	1	22-Jan-16	23-Jan-16																						
	3MSS.1189 Rebar Installation - PC 41 (02) - Portion B3	3	23-Jan-16	27-Jan-16	5.04T	5 men @ 0.9T/man/day																				
	3MSS.1219 Concrete pouring - PC 41 (02) - Portion B3	1	27-Jan-16	28-Jan-16	5.6m3																					
	PC42 (Type 07)	16	15-Jan-16	03-Feb-16																						
	3MSS.1175 Excavation works for Pile - PC 42 (07) - Portion B3	3	15-Jan-16	19-Jan-16	24.5m3	1 machine @ 190m3/day																				
	3MSS.11751 Breakdown Pile(s) - Portion B3	1	19-Jan-16	20-Jan-16																						
	3MSS.11752 Horizontal Blinding layer - Portion B3	1	20-Jan-16	21-Jan-16																						
	3MSS.11753 Formwork for Vertical blinding - Portion B3	1	21-Jan-16	22-Jan-16																						
	3MSS.11754 Concreting for Vertical blinding - Portion B3	1	22-Jan-16	23-Jan-16																						
	3MSS.11755 Strip formwork - Portion B3	1	23-Jan-16	25-Jan-16																						
	3MSS.11756 Install waterproofing - Portion B3	1	25-Jan-16	26-Jan-16																						
	3MSS.11757 Backfill - Portion B3	1	26-Jan-16	27-Jan-16																						
	3MSS.1190 Rebar Installation - PC 42 (07) - Portion B3	5	27-Jan-16	02-Feb-16	22.05T	5 men @ 0.9T/man/day																				
	3MSS.1220 Concrete pouring - PC 42 (07) - Portion B3	1	02-Feb-16	03-Feb-16	25m3																					
	PC43 (Type 02)	14	15-Jan-16	01-Feb-16																						
	3MSS.1177 Excavation works for Pile - PC 43 (02) - Portion B3	3	15-Jan-16	19-Jan-16	5.6m3	1 machine @ 190m3/day																				
	3MSS.11771 Breakdown Pile(s) - Portion B3	1	19-Jan-16	20-Jan-16																						
	3MSS.11772 Horizontal Blinding layer - Portion B3	1	20-Jan-16	21-Jan-16																						
	3MSS.11773 Formwork for Vertical blinding - Portion B3	1	21-Jan-16	22-Jan-16																						
	3MSS.11774 Concreting for Vertical blinding - Portion B3	1	22-Jan-16	23-Jan-16																						
	3MSS.11775 Strip formwork - Portion B3	1	23-Jan-16	25-Jan-16																						
	3MSS.11776 Install waterproofing - Portion B3	1	25-Jan-16	26-Jan-16																						
	3MSS.11777 Backfill - Portion B3	1	26-Jan-16	27-Jan-16																						
	3MSS.1192 Rebar Installation - PC 43 (02) - Portion B3	3	27-Jan-16	30-Jan-16	5.04T	5 men @ 0.9T/man/day																				
	3MSS.1222 Concrete pouring - PC 43 (02) - Portion B3	1	30-Jan-16	01-Feb-16	5.6m3																					
	PC30 (Type S5)	30	15-Jan-16	23-Feb-16																						
	3MSS.1178 Excavation works for Pile - PC 30 (S5) - Portion B3	3	15-Jan-16	19-Jan-16	142m3	1 machine @ 190m3/day																				
	3MSS.11781 Breakdown Pile(s) - Portion B3	1	19-Jan-16	20-Jan-16																						
	3MSS.11782 Horizontal Blinding layer - Portion B3	1	20-Jan-16	21-Jan-16																						
	3MSS.11783 Formwork for Vertical blinding - Portion B3	1	21-Jan-16	22-Jan-16																						
	3MSS.11784 Concreting for Vertical blinding - Portion B3	1	22-Jan-16	23-Jan-16																						
	3MSS.11785 Strip formwork - Portion B3	1	23-Jan-16	25-Jan-16																						
	3MSS.11786 Install waterproofing - Portion B3	1	25-Jan-16	26-Jan-16																						
	3MSS.11787 Backfill - Portion B3	1	26-Jan-16	27-Jan-16																						
	3MSS.1193 Rebar /Earthing Installation - PC 30 (S5) - Portion B3	18	27-Jan-16	20-Feb-16	128.55T																					
	3MSS.1223 Concrete pouring - PC 30 (S5) - Portion B3	2	20-Feb-16	23-Feb-16	142m3																					
	PC15 (Type 01)	9	19-Jan-16	29-Jan-16																						
	3MSS.1182 Excavation works for Pile - PC 15 (01) - Portion B3	1	19-Jan-16	20-Jan-16	2m3	1 machine @ 190m3/day																				
	3MSS.11821 Breakdown Pile(s) - Portion B3	1	20-Jan-16	21-Jan-16																						
	3MSS.11822 Horizontal Blinding layer - Portion B3	1	21-Jan-16	22-Jan-16																						
	3MSS.11823 Formwork for Vertical blinding - Portion B3	1	22-Jan-16	23-Jan-16																						
	3MSS.11824 Concreting for Vertical blinding - Portion B3	1	23-Jan-16	25-Jan-16																						
	3MSS.11825 Strip formwork - Portion B3	1	25-Jan-16	26-Jan-16																						
	3MSS.11826 Install waterproofing - Portion B3	1	26-Jan-16	27-Jan-16																						
	3MSS.11827 Backfill - Portion B3	1	27-Jan-16	28-Jan-16																						
	3MSS.1197 Rebar Installation - PC 15 (01) - Portion B3	1	28-Jan-16	28-Jan-16	1.8T	5 men @ 0.9T/man/day																				
	3MSS.1227 Concrete pouring - PC 15 (01) - Portion B3	1	29-Jan-16	29-Jan-16	2m3																					
	PC16 (Type 06)	9	20-Jan-16	30-Jan-16																						
	3MSS.1181 Excavation works for Pile - PC 16 (01) - Portion B3	1	20-Jan-16	20-Jan-16	2m3	1 machine @ 190m3/day																				
	3MSS.11811 Breakdown Pile(s) - Portion B3	1	21-Jan-16	21-Jan-16																						
	3MSS.11812 Horizontal Blinding layer - Portion B3	1	22-Jan-16	22-Jan-16																						
	3MSS.11813 Formwork for Vertical blinding - Portion B3	1	23-Jan-16	23-Jan-16																						
	3MSS.11814 Concreting for Vertical blinding - Portion B3	1	25-Jan-16	25-Jan-16																						
	3MSS.11815 Strip formwork - Portion B3	1	26-Jan-16	26-Jan-16																						
	3MSS.11816 Install waterproofing - Portion B3	1	27-Jan-16	27-Jan-16						</																

Activity ID	Activity Name	Duration	Start	Finish	Quants	Production rates	December					January				February				March					
							29	06	13	20	27	03	10	17	24	31	07	14	21	28	06	13	20	27	
	3MSS.10723	Formwork for Vertical blinding - Portion B3	1	25-Jan-16	25-Jan-16																				
	3MSS.10724	Concreting for Vertical blinding - Portion B3	1	26-Jan-16	26-Jan-16																				
	3MSS.10725	Strip formwork - Portion B3	1	27-Jan-16	27-Jan-16																				
	3MSS.10726	Install waterproofing - Portion B3	1	28-Jan-16	28-Jan-16																				
	3MSS.10727	Backfill - Portion B3	1	29-Jan-16	29-Jan-16																				
	3MSS.1081	Rebar Installation - PC 17 (01) - Portion B3	1	30-Jan-16	30-Jan-16	1.8T	-do-																		
	3MSS.1095	Concrete Pouring - PC 17 (01) - Portion B3	1	01-Feb-16	01-Feb-16	2m3	-do-																		
	Manhole (Type 12,8,40,1,11) - Portion B		12	20-Jan-16	03-Feb-16																				
	Type 8		4	21-Jan-16	25-Jan-16																				
	3MSS.1304	Excavation (Type 8) - GL 6-7/B-C - Portion B1	1	21-Jan-16	21-Jan-16	5m3	1 machine @ 190m3/day																		
	3MSS.1305	Rebar Installation (Type 8) - GL 6-7/B-C - Portion B1	1	22-Jan-16	22-Jan-16																				
	3MSS.1306	Formworks (Type 8) - GL 6-7/B-C - Portion B1	1	23-Jan-16	23-Jan-16																				
	3MSS.1307	Concrete Pouring (Type 8) - GL 6-7/B-C - Portion B1	1	25-Jan-16	25-Jan-16																				
	Type 40		3	22-Jan-16	26-Jan-16																				
	3MSS.1308	Excavation (Type 40) - GL 6-7/C-D - Portion B1	1	22-Jan-16	22-Jan-16	5m3	1 machine @ 190m3/day																		
	3MSS.1309	Rebar Installation (Type 40) - GL 6-7/C-D - Portion B1	1	23-Jan-16	23-Jan-16																				
	3MSS.1310	Formworks (Type 40) - GL 6-7/C-D - Portion B1	1	25-Jan-16	25-Jan-16																				
	3MSS.1311	Concrete Pouring (Type 40) - GL 6-7/C-D - Portion B1	0	26-Jan-16	26-Jan-16																				
	Type 12		4	20-Jan-16	23-Jan-16																				
	3MSS.1300	Excavation (Type 12) - GL 5/A-B - Portion B2	1	20-Jan-16	20-Jan-16	5m3	1 machine @ 190m3/day																		
	3MSS.1301	Rebar Installation (Type 12) - GL 5/A-B - Portion B2	1	21-Jan-16	21-Jan-16																				
	3MSS.1302	Formworks (Type 12) - GL 5/A-B - Portion B2	1	22-Jan-16	22-Jan-16																				
	3MSS.1303	Concrete Pouring (Type 12) - GL 5/A-B - Portion B2	1	23-Jan-16	23-Jan-16																				
	Type 1		3	28-Jan-16	01-Feb-16																				
	3MSS.1312	Excavation (Type 1) - GL 4-5/C-D - Portion B2	1	28-Jan-16	29-Jan-16	5m3	1 machine @ 190m3/day																		
	3MSS.1313	Rebar Installation (Type 1) - GL 4-5/C-D - Portion B2	1	29-Jan-16	30-Jan-16																				
	3MSS.1314	Formworks (Type 1) - GL 4-5/C-D - Portion B2	1	30-Jan-16	01-Feb-16																				
	3MSS.1315	Concrete Pouring (Type 1) - GL 4-5/C-D - Portion B2	0	01-Feb-16	01-Feb-16																				
	Type 11		4	29-Jan-16	03-Feb-16																				
	3MSS.1316	Excavation (Type 11) - GL 5-6/D - Portion B2	1	29-Jan-16	30-Jan-16	5m3	1 machine @ 190m3/day																		
	3MSS.1317	Rebar Installation (Type 11) - GL 5-6/D - Portion B2	1	30-Jan-16	01-Feb-16																				
	3MSS.1318	Formworks (Type 11) - GL 5-6/D - Portion B2	1	01-Feb-16	02-Feb-16																				
	3MSS.1319	Concrete Pouring (Type 11) - GL 5-6/D - Portion B2	1	02-Feb-16	03-Feb-16																				
	Lift / Escalator Pit		12	13-Jan-16	27-Jan-16																				
	Escalator Pit (GL 4-5/B'-C')		7	13-Jan-16	21-Jan-16																				
	3MSS.1324	Excavation - Portion B2	2	13-Jan-16	15-Jan-16	5m3	1 machine @ 190m3/day																		
	3MSS.1325	Rebar Installation - Portion B2	2	15-Jan-16	18-Jan-16																				
	3MSS.1326	Formworks - Portion B2	2	18-Jan-16	20-Jan-16																				
	3MSS.1327	Concrete Pouring - Portion B2	1	20-Jan-16	21-Jan-16																				
	Lift Pit (GL 3-4/B'-C')		7	19-Jan-16	27-Jan-16																				
	3MSS.1320	Excavation- Portion B3	2	19-Jan-16	21-Jan-16	5m3	1 machine @ 190m3/day																		
	3MSS.1321	Rebar Installation - Portion B3	2	21-Jan-16	23-Jan-16																				
	3MSS.1322	Formworks - Portion B3	2	23-Jan-16	26-Jan-16																				
	3MSS.1323	Concrete Pouring - Portion B3	1	26-Jan-16	27-Jan-16																				
	Stage 1 - Underground Drainage		37	09-Jan-16	25-Feb-16																				
	3MSS.1328	Installation of Underground Drainage below B2 Slab - Portion A1i & A1ii (2 Nr of M/H)	5	09-Jan-16	15-Jan-16	2 Nr																			
	3MSS.1329	Preparation of Formworks & Cast underground pipes - Portion A1i & A1ii	2	15-Jan-16	18-Jan-16																				
	3MSS.1330	Installation of Underground Drainage below B2 Slab - Portion A2 (2 Nr of M/H)	5	14-Jan-16	20-Jan-16	1 Nr																			
	3MSS.1331	Preparation of Formworks & Cast underground pipes - Portion A2	2	20-Jan-16	22-Jan-16																				
	3MSS.1332	Installation of Underground Drainage below B2 Slab - Portion A3 (2 Nr of M/H)	5	23-Jan-16	29-Jan-16	1 Nr																			
	3MSS.1333	Preparation of Formworks & Cast underground pipes - Portion A3	2	29-Jan-16	01-Feb-16																				
	3MSS.1334	Installation of Underground Drainage below B2 Slab - Portion B1 (1 Nr of M/H)	5	27-Jan-16	02-Feb-16	1 Nr																			
	3MSS.1335	Preparation of Formworks & Cast underground pipes - Portion B1	2	02-Feb-16	04-Feb-16																				
	3MSS.1336	Installation of Underground Drainage below B2 Slab - Portion B2 (3 Nr of M/H)	5	26-Jan-16	01-Feb-16	1 Nr																			
	3MSS.1337	Preparation of Formworks & Cast underground pipes - Portion B2	2	01-Feb-16	03-Feb-16																				
	3MSS.1338	Installation of Underground Drainage below B2 Slab - Portion B3 (1 Nr of M/H)	5	17-Feb-16	23-Feb-16	3 Nr																			
	3MSS.1339	Preparation of Formworks & Cast underground pipes - Portion B3	2	23-Feb-16	25-Feb-16																				
	Tower Crane No 1		62	30-Dec-15	15-Mar-16																				
	3MSS.1341	Design submission and approval	21	30-Dec-15	23-Jan-16																				
	3MSS.1342	Mobilization & procurement	30	25-Jan-16	02-Mar-16																				
	3MSS.1343	Blinding and Waterproofing	2	03-Mar-16	05-Mar-16																				
	3MSS.1344	Rebar Installation - Tower Cranes no 1 Base Casting	5	05-Mar-16	11-Mar-16																				
	3MSS.1345	Formworks Installation - Tower Cranes no 1 Base Casting	2	11-Mar-16	14-Mar-16																				
	3MSS.1346	Concrete Casting	1	14-Mar-16																					

 Forecast Bar  
 Milestone

M+ 3 Months Rolling Programme  
3MRP Rev B (2nd draft)  
Main Works Contract for M+ Museum Project

Date	Revision	Checked	Approved
02-Dec-15	3MRP Rev B (1st Draft)	Edgar / Chris	Leo Harnett
31-Dec-15	3MRP Rev B (2nd Draft)	Den / Chris	Leo Harnett












Forecast Bar  
 Milestone

M+ 3 Months Rolling Programme  
3MRP Rev B (2nd draft)  
Main Works Contract for M+ Museum Project

Date	Revision	Checked	Approved
02-Dec-15	3MRP Rev B (1st Draft)	Edgar / Chris	Leo Harnett
31-Dec-15	3MRP Rev B (2nd Draft)	Den / Chris	Leo Harnett

Activity ID	Activity Name	Duration	Start	Finish	Quants	Production rates	December					January				February				March					nr
							3					4				5				6					
							29	06	13	20	27	03	10	17	24	31	07	14	21	28	06	13	20	27	7
3MSS.S0027	Temporary Support (Shear Plate)	3	26-Feb-16	01-Mar-16																					
3MSS.S0028	Bottom Rebar	15	01-Mar-16	18-Mar-16																					
3MSS.S0029	Install 3 Nr Shear Plates	7	18-Mar-16	30-Mar-16																					
DCS Structure		55	31-Dec-15	09-Mar-16																					
3MSS.D001	Excavate from +5.50mPD (Existing Level) to +4.85mPD	4	31-Dec-15	06-Jan-16	427m3	1 machine @ 190m3/day																			
3MSS.D002	Excavate from +4.85mPD to +3.70mPD	4	06-Jan-16	11-Jan-16	756m3	1 machine @ 190m3/day																			
3MSS.D003	Install 1st Layer Struts at +4.2mPD	13	11-Jan-16	26-Jan-16																					
3MSS.D004	Excavate from +3.5 to -0.50mPD	15	25-Jan-16	15-Feb-16	2764m3	1 machine @ 190m3/day																			
3MSS.D005	Install 2nd Layer Struts at 0.0mPD (w/ preloading)	13	15-Feb-16	01-Mar-16																					
3MSS.D006	Excavate to -0.5mPD to -2.5mPD	7	01-Mar-16	09-Mar-16	1316m3	1 machine @ 190m3/day																			
Tower Crane No 3		47	30-Dec-15	26-Feb-16																					
3MSS.T002	Position Sign-off for TC3	1	30-Dec-15	30-Dec-15																					
3MSS.T003	Design submission and approval of TC base	10	05-Jan-16	15-Jan-16																					
3MSS.T004	Mobilization & procurement	15	16-Jan-16	02-Feb-16																					
3MSS.T006	Excavate ro reduce level +2.45mPD	2	16-Jan-16	18-Jan-16	464m3	350m3/day																			
3MSS.T007	Excavate battered slope	3	19-Jan-16	21-Jan-16	510m3	350m3/day																			
3MSS.T008	Excavation for TC3 Base	3	22-Jan-16	25-Jan-16	6m3	1 machine @ 190m3/day																			
3MSS.T009	Rebar Installation for TC3 Base	3	26-Jan-16	28-Jan-16																					
3MSS.T010	Formworks Installation for TC3 Base	1	29-Jan-16	29-Jan-16																					
3MSS.T011	Concrete Pouring & Curing for TC3 Base	7	30-Jan-16	06-Feb-16																					
3MSS.T012	Erection of Tower Crane No 3	14	11-Feb-16	26-Feb-16																					
AEL & ECM		25	11-Jan-16	12-Feb-16																					
3MSS.AEL0010	HCC issue Method Statements for Protection of AEL & ECM	0	11-Jan-16																						
3MSS.AEL0012	Approval & Consents For Method Statements	20	11-Jan-16	03-Feb-16																					
3MSS.AEL020	Protection of AEL & ECM	5	03-Feb-16	12-Feb-16																					
M+.30 ICP		51	18-Jan-16	19-Mar-16																					
Excavation Works		51	18-Jan-16	19-Mar-16																					
3MICP.1000	Apply for Approval and consents for Excavation (Stage 2A Excavation)	28	18-Jan-16	22-Feb-16																					
3MICP.1001	Obtain MJV/RSS Pump test Results (Bachy)	0		25-Jan-16																					
3MICP.1002	Submit Dewatering Proposal	15	25-Jan-16	15-Feb-16																					
3MICP.1010	Site Possession	0	11-Feb-16*																						
3MICP.1012	Obtain Consents for Excavation to Commence	0	22-Feb-16																						
3MICP.1020	Survey Existing Sheet Pile	5	11-Feb-16	16-Feb-16																					
3MICP.1030	Install 6Nr Pump Wells / Monitoring points 12Nr	6	15-Feb-16	20-Feb-16	6nr Pumps / 12nr																				
3MICP.1040	Excavate Central portion Max 30 deg open cut +3.6mPD to -1.65mPD (5.275m)	24	22-Feb-16	19-Mar-16	16,877m3	2nr excavators @700m3/d																			



-   Baseline Milestone
-  Primary Baseline
-   Milestone
-  Non-Critical
-  Critical Bar
-  Actual Work
-  Summary Bar

## (3MRP) 3-Months Rolling Programme Status at 31 March 2016



Date	Revision	Checked	Approved
02-Dec-15	3MRP Status Nov 2015 - Rev ...	Chris / Edgar	Leo Harnett
31-Dec-15	3MRP Status Dec 2015 - Rev ...	Denmark / C...	Leo Harnett
15-Mar-16	3MRP Status Feb 2016 - Rev ...	Jojo Alcazaren	Desmond Sze
31-Mar-16	3MRP Status Mar 2016 - Rev 0	Jojo Alcazaren	Chris Chau

[illegible]

Activity ID	Activity Name	Ori. Dur.	BaseLine Start	BaseLine Finish	Forecast / Actual Start	Forecast / Actual Finish	% Compl.	Finish Variance	Current Float	March 2016					April 2016					May 2016				June 2016				July 2016			
										28	06	13	20	27	03	10	17	24	01	08	15	22	29	05	12	19	26	03	10	17	
Structural Steel Truss																															
DS.1040	Steel Tuss - Procurement, Fabrication & Delivery	150	14-Feb-16	12-Jul-16	29-Jan-16 A	16-Sep-16	0%	-66	91																						
DS.1050	Steel Tuss - First Batch Arrival on Site (Contract Requirem	0	01-Jun-16		16-May-16		0%	16	91																						
Glass Curtain Wall																															
DS.2140	Glass Curtain Wall - CA Review & Approval	30	29-Mar-16	27-Apr-16	31-Mar-16	29-Apr-16	0%	-2	93																						
DS.2150	Glass Curtain Wall - BD Submission and Approval	60	28-Apr-16	26-Jun-16	30-Apr-16	28-Jun-16	0%	-2	93																						
Art Lift (LT-11 & LT-13)																															
DS.5010	Art Lift - Award Specialist Subcontractor	0	01-Dec-15		31-Mar-16		0%	-121	78																						
DS.5020	Art Lift - Shop Drawings, Materials & Method Statements &	90	01-Dec-15	28-Feb-16	31-Mar-16	28-Jun-16	0%	-121	127																						
Lifts and Escalator																															
DS.5100	Lift & Escalator - Award Lifts & Escalators Subcontractor	0	01-Dec-15		31-Mar-16		0%	-121	44																						
DS.5110	Lift & Escalator - Shop Drawings, Materials & Method State	90	01-Dec-15	28-Feb-16	31-Mar-16	28-Jun-16	0%	-121	78																						
Mechanical and Lifting Platform																															
DS.5220	Lifting Platform - CA Review & Comments	30	29-Feb-16	29-Mar-16	22-Feb-16 A	15-Apr-16	50%	-17	231																						
DS.5230	Lifting Platform - Incorporate Comments & Resubmit	30	30-Mar-16	28-Apr-16	16-Apr-16	15-May-16	0%	-17	231																						
DS.5240	Lifting Platform - CA Review & Approval	30	29-Apr-16	28-May-16	16-May-16	14-Jun-16	0%	-17	231																						
Fire Services																															
DS.4020	FS - CA Review & Comments	30	30-Mar-16	28-Apr-16	16-Apr-16	15-May-16	0%	-17	45																						
DS.4030	FS - Incorporate Comments & Resubmit	30	29-Apr-16	28-May-16	16-May-16	14-Jun-16	0%	-17	45																						
Electrical and ELV Systems																															
DS.4120	Elect & ELV Systems - Shop Drawings and Materials Subm	120	01-Dec-15	29-Mar-16	13-Jan-16 A	15-Apr-16	90%	-17	95																						
DS.4130	Elect & ELV Systems - CA Review & Comments	30	30-Mar-16	28-Apr-16	16-Apr-16	15-May-16	0%	-17	95																						
DS.4140	Elect & ELV Systems - Incorporate Comments & Resubmit	30	29-Apr-16	28-May-16	16-May-16	14-Jun-16	0%	-17	95																						
MVAC																															
DS.3070	MVAC - Shop Drawings, Materials & Method Statements Si	120	01-Dec-15	29-Mar-16	12-Dec-15 A	15-Apr-16	90%	-17	65																						
DS.3080	MVAC - CA Review & Comments	30	30-Mar-16	28-Apr-16	16-Apr-16	15-May-16	0%	-17	65																						
DS.3090	MVAC - Incorporate Comments & Resubmit	30	29-Apr-16	28-May-16	16-May-16	14-Jun-16	0%	-17	65																						
Plumbing and Drainage																															
DS.3010	Plumbing & Drainage - Shop Drawings, Materials & Methoc	90	31-Dec-15	29-Mar-16	21-Dec-15 A	15-Apr-16	90%	-17	95																						
DS.3020	Plumbing & Drainage - CA Review & Comments	30	30-Mar-16	28-Apr-16	16-Apr-16	15-May-16	0%	-17	95																						
DS.3030	Plumbing & Drainage - Incorporate Comments & Resubmit	30	29-Apr-16	28-May-16	16-May-16	14-Jun-16	0%	-17	95																						
Ceramic Tile																															
DS.6010	Ceramic Tile - Shop Drawings, Materials Sample Submissio	90	30-Nov-15	27-Feb-16	01-Dec-15 A	15-Apr-16	90%	-48	775																						
DS.6020	Ceramic Tile - CA Review & Comments	30	28-Feb-16	28-Mar-16	16-Apr-16	15-May-16	0%	-48	775																						
DS.6030	Ceramic Tile - Incorporate Comments & Resubmit	30	29-Mar-16	27-Apr-16	16-May-16	14-Jun-16	0%	-48	775																						
Soft and Hard Landscaping																															
DS.7000	Landscaping - Award Specialist Subcontractor	0	18-Apr-16		18-Apr-16		0%	0	33																						
DS.7010	Landscaping - Shop Drawings, Materials & Method Statem	90	18-Apr-16	16-Jul-16	18-Apr-16	16-Jul-16	0%	0	33																						
Design Detailing / Buildability Co-ordination																															
Spatial Coordination for BIM / CSD / CBWD																															



Activity ID	Activity Name	Ori. Dur.	BaseLine Start	BaseLine Finish	Forecast / Actual Start	Forecast / Actual Finish	% Compl.	Finish Variance	Current Float	March 2016					April 2016					May 2016				June 2016				July 2016												
										28	06	13	20	27	03	10	17	24	01	08	15	22	29	05	12	19	26	03	10	17										
1	M+ Podium																																							
	B00.0040	Preparation and submission for BIM / CSD / CBWD at G/F (	60	30-Nov-15	28-Jan-16	30-Nov-15 A	30-Apr-16	50%	-93	26											B00.0040, Preparation and submission for BIM / CSD / CBWD at G/F (																			
	B00.0050	Preparation and submission for BIM / CSD / CBWD at 1/F (	60	30-Nov-15	28-Jan-16	30-Nov-15 A	30-Apr-16	50%	-93	118											B00.0050, Preparation and submission for BIM / CSD / CBWD at 1/F (																			
	B00.0060	Review, resubmission and approval for BIM / CSD / CBWD	30	29-Jan-16	27-Feb-16	01-May-16	30-May-16	0%	-93	115											B00.0060, Review, resubmission and approval for BIM / CSD / CBWD																			
	B00.0070	Review, resubmission and approval for BIM / CSD / CBWD	30	29-Jan-16	27-Feb-16	01-May-16	30-May-16	0%	-93	162											B00.0070, Review, resubmission and approval for BIM / CSD / CBWD																			
	B00.0080	Preparation and submission for BIM / CSD / CBWD at 1M/F	60	29-Jan-16	28-Mar-16	01-May-16	29-Jun-16	0%	-93	26											B00.0080, Preparation and submission for BIM / CSD / CBWD at 1M/F																			
	B00.0090	Preparation and submission for BIM / CSD / CBWD at 2/F (	60	29-Jan-16	28-Mar-16	01-May-16	29-Jun-16	0%	-93	118											B00.0090, Preparation and submission for BIM / CSD / CBWD at 2/F (																			
	M+ Tower																																							
	B6B.0000	Preparation and submission for BIM / CSD / CBWD at 4/F (	45	29-Mar-16	12-May-16	01-May-16	14-Jun-16	0%	-33	118											B6B.0000, Preparation and submission for BIM / CSD / CBWD at 4/F (																			
	CSF Block																																							
	B20.0280	Preparation and submission for BIM / CSD / CBWD at G/F (	45	13-Feb-16	28-Mar-16	15-May-16	28-Jun-16	0%	-92	28											B20.0280, Preparation and submission for BIM / CSD / CBWD at G/F (																			
	Interfacing Car Park and Sewage Pumping Station (SPS)																																							
	D01.0000	Preparation and submission for BIM / CSD / CBWD at SPS	45	30-Dec-15	12-Feb-16	15-May-16	28-Jun-16	0%	-137	28											D01.0000, Preparation and submission for BIM / CSD / CBWD at SPS																			
	D02.0000	Preparation and submission for BIM / CSD / CBWD at ICP E	45	01-Oct-15	14-Nov-15	31-Mar-16	14-May-16	0%	-182	-1											D02.0000, Preparation and submission for BIM / CSD / CBWD at ICP E																			
	D02.0010	Review, resubmission and approval for BIM / CSD / CBWD	15	15-Nov-15	29-Nov-15	15-May-16	29-May-16	0%	-182	59											D02.0010, Review, resubmission and approval for BIM / CSD / CBWD																			
	D02.0020	Preparation and submission for BIM / CSD / CBWD at ICP C	45	15-Nov-15	29-Dec-15	15-May-16	28-Jun-16	0%	-182	-1											D02.0020, Preparation and submission for BIM / CSD / CBWD at ICP C																			
	4D Time Management (1st Draft)																																							
	B00.0160	Facade works	75	14-Jan-16	28-Mar-16	01-Feb-16 A	05-Apr-16	0%	-8	1025											B00.0160, Facade works, Facade works																			
	B00.0170	M+ Podium	75	14-Jan-16	28-Mar-16	01-Feb-16 A	05-Apr-16	90%	-8	250											B00.0170, M+ Podium, M+ Podium																			
	B20.0400	M+ Tower	75	29-Mar-16	11-Jun-16	06-Apr-16	19-Jun-16	0%	-8	250											B20.0400, M+ Tower, M+ Tower																			
	B20.0410	CSF CDS/CBWD	75	29-Mar-16	11-Jun-16	06-Apr-16	19-Jun-16	0%	-8	256											B20.0410, CSF CDS/CBWD, CSF CDS/CBWD																			
	B20.0420	ICP and SPS	75	14-Jan-16	28-Mar-16	31-Mar-16	13-Jun-16	0%	-77	956											B20.0420, ICP and SPS, ICP and SPS																			
	Visual Mock-Up (VMU)																																							
	VMU Preliminary																																							
	A00.3610	VMU Works Period (Contract requirement of 200 calendar	206	01-Oct-15	17-Apr-16	01-Dec-15 A	02-Sep-16	0%	-138	15											A00.3610, VMU Works Period (Contract requirement of 200 calendar																			
	VMU Document / Drawing Submission																																							
	A00.3020	Submit & Approve of Shop Drawing for Cast-in Items	45	01-Oct-15	14-Nov-15	10-Oct-15 A	04-Apr-16	90%	-142	62											A00.3020, Submit & Approve of Shop Drawing for Cast-in Items, S																			
	A00.3050	Submit & Approve of CSD/CBWD	46	05-Oct-15	19-Nov-15	25-Nov-15 A	08-Apr-16	90%	-141	53											A00.3050, Submit & Approve of CSD/CBWD, Submit & Approve																			
	A00.3060	Submit & Approve of Facade Shop Drawings & Samples	105	01-Oct-15	13-Jan-16	26-Nov-15 A	19-Apr-16	90%	-97	53											A00.3060, Submit & Approve of Facade Shop Drawings & S																			
	VMU Procurements / Materials Delivery to Site																																							
	A00.3620	Facade - Ordering & Production for Concrete Shell Mock-Up	84	24-Nov-15	15-Feb-16	02-Jan-16 A	05-May-16	80%	-80	73											A00.3620, Facade - Ordering & Production for Concrete Shell Mock-Up																			
	A00.3625	Facade - Ordering & Production for Hybrid Mock-Up	114	25-Oct-15	15-Feb-16	02-Mar-16 A	25-May-16	30%	-100	53											A00.3625, Facade - Ordering & Production for Hybrid Mock-Up																			
	A00.3630	Building Services Works - Materials Ordering / Fabrication /	90	27-Oct-15	24-Jan-16	25-Dec-15 A	15-May-16	60%	-112	62											A00.3630, Building Services Works - Materials Ordering / Fabrication /																			
A00.3640	ABWF Works - Materials Ordering / Fabrication / Delivery	60	23-Nov-15	21-Jan-16	18-Jan-16 A	15-May-16	70%	-115	96											A00.3640, ABWF Works - Materials Ordering / Fabrication / Delivery																				
VMU Construction																																								
Step 2.0 - Existing Concrete Shell																																								
VMU Building Service Works																																								
A00.3206	Building Services (FS) - (1st & 2nd Fix) Main & Secondary	12	04-Dec-15	17-Dec-15	21-Mar-16 A	15-Apr-16	50%	-92	43											A00.3206, Building Services (FS) - (1st & 2nd Fix) Main & Secondary																				
A00.3208	Building Services (FS) - Install Cable Containment / Wiring	6	15-Jan-16	21-Jan-16	16-Apr-16	22-Apr-16	0%	-72	58											A00.3208, Building Services (FS) - Install Cable Containment / Wiring																				
A00.3210	Building Services (MVAC) - Final Fix) Ceiling dumper, Air Gi	4	19-Feb-16	23-Feb-16	18-May-16	21-May-16	0%	-70	52											A00.3210, Building Services (MVAC) - Final Fix) Ceiling dumper, Air Gi																				
A00.3220	Building Services (Elect & ELV) - (Final Fix) CCTV Camera,	6	24-Feb-16	01-Mar-16	23-May-16	28-May-16	0%	-70	52											A00.3220, Building Services (Elect & ELV) - (Final Fix) CCTV Camera,																				



Activity ID	Activity Name	Ori. Dur.	BaseLine Start	BaseLine Finish	Forecast / Actual Start	Forecast / Actual Finish	% Compl.	Finish Variance	Current Float	March 2016					April 2016					May 2016					June 2016					July 2016			
										28	06	13	20	27	03	10	17	24	01	08	15	22	29	05	12	19	26	03	10	17			
A00.3230, Building Services (FS) - (Final Fix) Fire Alarm, PA Speaker, VMU ABWF & Finishes VMU Gallery & B1 Plaza Space VMU Ceiling VMU Wall VMU Lobby Space VMU Wall VMU Floor VMU Facade Works VMU Step 2.1 - Hybrid Shell Mock-Up VMU Structural Works VMU ABWF & Finishes VMU MEP Building Service Works VMU External Facade VMU External Works VMU MEP - FS Pipeworks	A00.3230	Building Services (FS) - (Final Fix) Fire Alarm, PA Speaker,	6	29-Feb-16	05-Mar-16	27-May-16	02-Jun-16	0%	-70	52																							
	A00.3100	Install Ceiling grid / Gypsum board	8	18-Dec-15	30-Dec-15	16-Apr-16	25-Apr-16	0%	-92	52																							
	A00.3110	Ceiling Painting	4	31-Dec-15	05-Jan-16	26-Apr-16	29-Apr-16	0%	-92	52																							
	A00.3145	Install Glass / Metal Ballustrade	13	22-Jan-16	05-Feb-16	30-Apr-16	17-May-16	0%	-78	52																							
	A00.3150	Wall Painting	6	12-Feb-16	18-Feb-16	10-May-16	17-May-16	0%	-70	52																							
	A00.3190	Install Ceramic Cladding & Rain Screen	7	28-Jan-16	04-Feb-16	25-May-16	01-Jun-16	0%	-92	43																							
	A00.3660	Polished Concrete Flooring Treatment	6	18-Dec-15	28-Dec-15	16-Apr-16	22-Apr-16	0%	-92	43																							
	A00.3670	Precast Concrete Paver Installation	12	29-Dec-15	12-Jan-16	23-Apr-16	07-May-16	0%	-92	43																							
	A00.3680	Install Metal Mesh Balustrade	13	13-Jan-16	27-Jan-16	09-May-16	24-May-16	0%	-92	43																							
	A00.3685	Access date for Concrete Shell Mock-Up	0	16-Feb-16		26-May-16		0%	-80	42																							
	A00.3690	Erection of Scaffolds for Shell Mock-Up	4	16-Feb-16	19-Feb-16	26-May-16	30-May-16	0%	-80	42																							
	A00.3275	Hybrid Mock Up - Curing, Dismantle Scaffolds and Cleaning	21	08-Dec-15	05-Jan-16	24-Mar-16 A	09-Apr-16	50%	-75	44																							
	A00.3280	Hybrid Mock Up - Install PC Paver at External Floor	12	19-Dec-15	06-Jan-16	09-Apr-16	22-Apr-16	0%	-85	44																							
	A00.3290	Hybrid Mock Up - Internal Wall Plasters and Wet Trades	6	06-Jan-16	12-Jan-16	22-Apr-16	28-Apr-16	0%	-85	44																							
	A00.3300	Hybrid Mock Up - Door Frame Installation	3	09-Jan-16	12-Jan-16	26-Apr-16	28-Apr-16	0%	-85	44																							
	A00.3310	Hybrid Mock Up - Floor Screeding & Cure	4	13-Jan-16	16-Jan-16	29-Apr-16	04-May-16	0%	-85	44																							
	A00.3320	Hybrid Mock Up - Install wooden slat & tower open mesh c	6	29-Jan-16	04-Feb-16	18-May-16	24-May-16	0%	-85	44																							
	A00.3330	Hybrid Mock Up - Install MML Inclines Concrete Ceiling for	3	02-Feb-16	04-Feb-16	21-May-16	24-May-16	0%	-85	44																							
	A00.3360	Hybrid Mock Up - Building Services (Elect) - (1st & 2nd Fix	10	18-Jan-16	28-Jan-16	05-May-16	17-May-16	0%	-85	64																							
	A00.3370	Hybrid Mock Up - Building Services (FS) - (1st & 2nd Fix) M	10	18-Jan-16	28-Jan-16	05-May-16	17-May-16	0%	-85	64																							
	A00.3380	Hybrid Mock Up - Building Services (Elect) - (Final Fix) Smc	6	05-Feb-16	15-Feb-16	25-May-16	31-May-16	0%	-85	64																							
	A00.3390	Hybrid Mock Up - Building Services (FS) - Hose Reel Panel I	6	05-Feb-16	15-Feb-16	25-May-16	31-May-16	0%	-85	64																							
	A00.3400	Hybrid Mock Up - Building Services (FS) - (Final Fix) Sprink	6	05-Feb-16	15-Feb-16	25-May-16	31-May-16	0%	-85	64																							
	A00.3765	Hybrid Mock Up - Access Date for Hybrid Mock-Up	0	20-Jan-16		07-May-16		0%	-85	51																							
	A00.3775	Hybrid Mock Up - Erection for Scaffolds	3	20-Jan-16	22-Jan-16	07-May-16	10-May-16	0%	-85	51																							
	A00.3785	Hybrid Mock Up - Install External Facade for Hybrid Mock-L	14	23-Jan-16	11-Feb-16	11-May-16	27-May-16	0%	-85	51																							
	A00.3795	Hybrid Mock Up - Install Glazing & Sealant Application	2	12-Feb-16	13-Feb-16	28-May-16	30-May-16	0%	-85	51																							

Activity ID	Activity Name	Ori. Dur.	BaseLine Start	BaseLine Finish	Forecast / Actual Start	Forecast / Actual Finish	% Compl.	Finish Variance	Current Float	March 2016					April 2016					May 2016				June 2016				July 2016			
										28	06	13	20	27	03	10	17	24	01	08	15	22	29	05	12	19	26	03	10	17	
1	A00.3835	Hybrid Mock Up - Excavation Works From Existing Dog Ho	3	22-Jan-16	25-Jan-16	27-Apr-16	29-Apr-16	0%	-75	53	A00.3835, Hybrid Mock Up - Excavation Works From Existing Dog Ho																				
	A00.3845	Hybrid Mock Up - Install FS Water Pipeworks & PVC ducts	6	25-Jan-16	30-Jan-16	29-Apr-16	06-May-16	0%	-75	53	A00.3845, Hybrid Mock Up - Install FS Water Pipeworks & PVC ducts																				
	A00.3855	Hybrid Mock Up - Lay Cabling / Wiring and Termination	4	01-Feb-16	04-Feb-16	07-May-16	11-May-16	0%	-75	53	A00.3855, Hybrid Mock Up - Lay Cabling / Wiring and Termination																				
	VMU MEP - Electrical Works																														
	A00.3865	Hybrid Mock Up - Install Pipe ducts From Hybrid Mock-Up t	6	06-Jan-16	12-Jan-16	11-Apr-16	16-Apr-16	0%	-75	80	A00.3865, Hybrid Mock Up - Install Pipe ducts From Hybrid Mock-Up t																				
	A00.3875	Hybrid Mock Up - Lay Cabling & Termination From Hybrid M	10	13-Jan-16	23-Jan-16	18-Apr-16	28-Apr-16	0%	-75	80	A00.3875, Hybrid Mock Up - Lay Cabling & Termination From Hybrid M																				
	VMU Step 2.2 - Concrete Stair																														
	VMU ABWF & Finishes																														
	A00.3430	Concrete Stair - Timber Tread & Risers Installation	10	02-Dec-15	12-Dec-15	12-May-16	24-May-16	0%	-127	13	A00.3430, Concrete Stair - Timber Tread & Risers Installation																				
	A00.3440	Concrete Stair - Exposed Concrete Treament	13	23-Oct-15	06-Nov-15	31-Mar-16	15-Apr-16	0%	-127	13	A00.3440, Concrete Stair - Exposed Concrete Treament																				
	A00.3450	Concrete Stair - Precast Concrete Plank & Treads Installati	7	10-Nov-15	17-Nov-15	19-Apr-16	26-Apr-16	0%	-127	13	A00.3450, Concrete Stair - Precast Concrete Plank & Treads Installati																				
	A00.3460	Concrete Stair - Metal Balustrade w/ Railing Installation	12	18-Nov-15	01-Dec-15	27-Apr-16	11-May-16	0%	-127	13	A00.3460, Concrete Stair - Metal Balustrade w/ Railing Installation																				
	A00.3470	Concrete Stair - Painting Works for Metal Balustrade	4	14-Dec-15	17-Dec-15	25-May-16	28-May-16	0%	-127	13	A00.3470, Concrete Stair - Painting Works for Metal Balustrade																				
	VMU MEP Building Service Works																														
	A00.3480	Concrete Stair - Electrical Works for LED Lighting on Hand	8	18-Dec-15	30-Dec-15	30-May-16	07-Jun-16	0%	-127	13	A00.3480, Concrete Stair - Electrical Works for LED Lighting on Hand																				
	VMU Statutory Submission & Inspection																														
	VMU WSD (FS Pipeworks)																														
	A00.3880	VMU - Submit Form WW046 (Part 1 & 2) to WSD (Subject	90	04-Nov-15	01-Feb-16	12-Jan-16 A	12-Apr-16	90%	-71	82	A00.3880, VMU - Submit Form WW046 (Part 1 & 2) to WSD (Subject																				
	A00.3890	VMU - Submit Form WW046 (Part 3) to WSD (by MJV)	12	02-Feb-16	13-Feb-16	13-Apr-16	24-Apr-16	0%	-71	82	A00.3890, VMU - Submit Form WW046 (Part 3) to WSD (by MJV)																				
	A00.3900	VMU - Submit Form WW046 (Part 4) to WSD	12	14-Feb-16	25-Feb-16	12-May-16	23-May-16	0%	-88	65	A00.3900, VMU - Submit Form WW046 (Part 4) to WSD																				
	A00.3910	VMU - Inspection and Approval by WSD	1	03-Mar-16	03-Mar-16	30-May-16	30-May-16	0%	-88	65	A00.3910, VMU - Inspection and Approval by WSD																				
	Last Date for Exercising Provisional Sum & Optional Items (Refer Annex B to Preamble) (To be revised																														
	Other Provisional Sums / Options for M+ Main Works Contract																														
	PP2.2	Interface car park - ELS, Architectural and BS works	0		28-Jan-16		31-Mar-16	0%	-62	876	Interface car park - ELS, Architectural and BS works, Interface car pa																				
	PP3.2	Sewage pumping station (SPS) - ELS, foundation, signage,	0		28-Jan-16		31-Mar-16	0%	-62	1031	Sewage pumping station (SPS) - ELS, foundation, signage, builder's v																				
PP5	BWIC / basic Building Services provisions for CLP transforr	0		26-Sep-15		31-Mar-16	0%	-187	1031	BWIC / basic Building Services provisions for CLP transformer rooms,																					
PP6	CA/RSS M+PSO - Complete office accommodation and sup	0		26-Sep-15		31-Mar-16	0%	-187	1031	CA/RSS M+PSO - Complete office accommodation and supporting faci																					
Preliminaries / Construction																															
Site Accomodation & Facilities																															
Site Office Set Up																															
A00.2060	M66 - Period of Occupying Temporary Container Offices	197	17-Nov-15	31-May-16	17-Nov-15 A	31-May-16	70%	0	969	A00.2060, M66 - Period of Occupying Temporary Container Offices																					
A00.2070	L22 & L23 - Office Construction / Setup	108	15-Dec-15	31-Mar-16	02-Jan-16 A	30-Apr-16	70%	-30	1000	A00.2070, L22 & L23 - Office Construction / Setup																					
Plant & Equipment																															
A00.2000	Erection of Tower Crane No. 2	21	23-May-16	23-Jun-16	23-May-16	23-Jun-16	0%	0	3	A00.2000, Ere																					
A00.2100	Erection of Tower Crane No. 3	21	02-Mar-16	29-Mar-16	24-May-16	23-Jun-16	0%	-62	63	A00.2100, Ere																					
Excavation & ELS																															
BD Milestones & BD Stages LoE																															
Portion M01																															
B10.3360	BD Stage 1 - Excavation for Area A1,A2,A3 & B1, B2,B3 &	85	02-Nov-15	16-Feb-16	02-Nov-15 A	21-Apr-16	0%	-52	45	BD Stage 1 - Excavation for Area A1,A2,A3 & B1, B2,B3 &																					
B10.3370	BD Stage 2 - Construct B2 slab for A1,A2,A3 & B1, B2,B3 i	69	17-Nov-15	30-Apr-16	12-Nov-15 A	30-Apr-16	0%	0	1	BD Stage 2 - Construct B2 slab for A1,A2,A3 & B1, B2,B3 i																					

Activity ID	Activity Name	Ori. Dur.	BaseLine Start	BaseLine Finish	Forecast / Actual Start	Forecast / Actual Finish	% Compl.	Finish Variance	Current Float	March 2016					April 2016					May 2016				June 2016				July 2016		
										28	06	13	20	27	03	10	17	24	01	08	15	22	29	05	12	19	26	03	10	17
B10.3380	BD Stage 3 - Construct B2 slab for A4, B4 & PC constructio	15	03-May-16	26-May-16	03-May-16	26-May-16	0%	0	2																					
B10.3390	BD Stage 4 - Construct B2 slab for A5, B5 & Site formatior	0	23-Apr-16	23-Apr-16	16-Apr-16	16-Apr-16	0%	6	726																					
B10.3400	BD Stage 5 - Construct B2 slab for A6, A7, A8, B6 & Site fr	103	25-Apr-16	08-Oct-16	18-Apr-16	20-Sep-16	0%	11	35																					
B10.3410	BD Stage 6 - Construct PC forA9, A10, A11, A12, B7, B8, I	61	24-May-16	10-Sep-16	24-May-16	25-Aug-16	0%	11	63																					
AEL North																														
Portion A5, B5																														
B10.3440	AEL North - ELS Stage 1 Wailing Installation +4.0mPD (Pc	10	07-Mar-16	17-Mar-16	07-Mar-16 A	02-Apr-16	0%	-11	9																					
Portion A6, A7, A10, A11																														
B10.2078	Review and approval by BD for Combined ELS / Exc for A2,	28			11-Mar-16 A	11-Apr-16	70%		13																					
B10.2080	AEL North - ELS Stage 4 Site Formation (Portion A6, A7),	26	19-Mar-16	22-Apr-16	30-Mar-16 A	30-Apr-16	0%	-7	13																					
Portion B8 & A9, B9																														
B10.2100	AEL North - ELS Stage 5 Site Formation (B8 & A9, B9)	16	16-May-16	07-Jun-16	16-May-16	07-Jun-16	0%	0	24																					
Portion A8, B6, A12, B7																														
B10.3570	AEL North - ELS Stage 4 Site Formation (Portion A8, B6)	26	19-Mar-16	22-Apr-16	31-Mar-16	30-Apr-16	0%	-7	84																					
AEL South																														
DCS																														
B10.1160	DCS - Excavation & Lateral Support	30	19-Dec-15	27-Jan-16	19-Dec-15 A	05-Apr-16	95%	-52	45																					
B10.1210	DCS - Excavation for Pile Cap & Sump Pit	14	28-Jan-16	16-Feb-16	06-Apr-16	21-Apr-16	0%	-52	45																					
B10.1240	DCS - Complete Excavation for Advanced Access of M14a,	0		16-Feb-16		21-Apr-16	0%	-52	45																					
AEL South except DCS																														
B10.1090	AEL South - Plant Room - Excavate to +2.45mPD for Plani	16	20-Apr-16	12-May-16	21-May-16	14-Jun-16	0%	-21	218																					
ICP																														
B10.3180	ICP - Dewatering Commence	0	22-Feb-16		14-Apr-16		0%	-41	-39																					
B10.3190	ICP - Excavate Central Portion from +3.625mPD to -1.650	30	22-Feb-16	30-Mar-16	14-Apr-16	24-May-16	0%	-41	-39																					
B10.3200	ICP - Excavate Area A to -1.650mPD	30	31-Mar-16	09-May-16	26-May-16	09-Jul-16	0%	-40	-39																					
Structures																														
Basement Structures / Sub-Structure																														
Pilecaps																														
AEL North																														
Stage 1 - Pilecap (A1,A2,A3,B1,B2,B3)																														
B10.3027	AEL North - Excavation & Concrete Base for Tower Crane I	12	03-May-16	21-May-16	03-May-16	21-May-16	0%	0	3																					
Stage 2 & 3 - Pilecap (A4,A5,B4,B5)																														
Pilecap (A4 & A5)																														
B10.2060	AEL North - ELS Stage 2 - Ist Lateral Support (A4 / A5)	12	22-Mar-16	08-Apr-16	31-Mar-16 A	12-Apr-16	5%	-3	2																					
B10.2060a	AEL North - ELS Stage 2 - 2nd trimming (A4 / A5)	2	09-Apr-16	11-Apr-16	13-Apr-16	14-Apr-16	0%	-3	2																					
B10.2060b	AEL North - ELS Stage 2 - 2nd Lateral Support (A4 / A5)	9	12-Apr-16	25-Apr-16	15-Apr-16	25-Apr-16	0%	0	2																					
B10.2060c	AEL North - ELS Stage 2 - Excavate Pilecap Formation (A4)	5	26-Apr-16	30-Apr-16	26-Apr-16	30-Apr-16	0%	0	2																					
B10.2060d	AEL North - ELS Stage 3 - Construct Pilecap & B2 Slab (A4	10	03-May-16	13-May-16	03-May-16	13-May-16	0%	0	2																					
B10.2060e	AEL North - ELS Stage 3 - 3rd Trimming (A5)	2	16-May-16	17-May-16	16-May-16	17-May-16	0%	0	2																					



[illegible]



Activity ID	Activity Name	Ori. Dur.	BaseLine Start	BaseLine Finish	Forecast / Actual Start	Forecast / Actual Finish	% Compl.	Finish Variance	Current Float	March 2016					April 2016					May 2016					June 2016					July 2016						
										28	06	13	20	27	03	10	17	24	01	08	15	22	29	05	12	19	26	03	10	17						
AEL North - B1/F Slab for Truss T1, T2 & T5 Erection	B10.3090	AEL North - Wall, Column & B1 Slab (Portion A4 & A5)	18	03-Mar-16	23-Mar-16	31-Mar-16	21-Apr-16	0%	-21	229																										
	AEL South - RC Structures Prior to Area M14 H/O																																			
	B10.1040	AEL South - Construct Core Wall on PC96 from B1F to 1M,	35	01-Apr-16	20-May-16	16-Apr-16	06-Jun-16	0%	-11	2																										
	B10.1050	AEL South - Construct B1 Slab for Basement Road Wall	15	01-Apr-16	20-Apr-16	16-Apr-16	06-May-16	0%	-11	13																										
	B10.3290	AEL South - Construct Basement Road Wall between PC 9	35	21-Apr-16	14-Jun-16	09-May-16	30-Jun-16	0%	-11	5																										
	B10.3300	AEL South - Construct External Wall between PC 96 & PC1	25	21-Apr-16	28-May-16	09-May-16	16-Jun-16	0%	-11	5																										
	B10.3310	AEL South - Construct Basement Road Wall between PC 1	16	29-Apr-16	24-May-16	19-May-16	11-Jun-16	0%	-11	13																										
	B10.3315	AEL South - Construct Walls, Column & Staircases to G/F I	27	29-Apr-16	13-Jun-16	20-May-16	28-Jun-16	0%	-11	5																										
	SPS Structures (include Excavation)																																			
	D01.3000	SPS - ELS Works (Provisional)	61	11-Feb-16	26-Apr-16	31-Mar-16	14-Jun-16	0%	-39	-37																										
	ICP Structures (include Excavation)																																			
	A3980	ICP - ELS works (Provisional)	110	22-Feb-16	26-Jul-16	14-Apr-16	23-Sep-16	0%	-39	-39																										
	External Works																																			
	M+ External Works																																			
	Utilities																																			
	Drainage																																			
	EW1010	Construct the DN375 and DN600 strom drains within the	75	10-Dec-15	14-Mar-16	12-Apr-16	01-Aug-16	0%	-95	111																										
	EW1045	Construct M+ manholes S1.1, S3.2, S3.3, S3.4 (terminal)	91	10-Dec-15	09-Mar-16	12-Apr-16	11-Jul-16	0%	-124	851																										
	Sewage																																			
	EW1000	Construct the DN375 sewer drain within Austin Road Wes	50	29-Dec-15	29-Feb-16	03-May-16	21-Jul-16	0%	-99	663																										
Test & Commissioning, Statutory Inspections & OP																																				
M+																																				
WSD (FS Pipeworks)																																				
SH4200	FS - Submit Form WW046 (Part 1 & 2) to WSD (Subject to	90	02-Feb-16	01-May-16	13-Apr-16	11-Jul-16	0%	-71	384																											
WSD (Plumbing)																																				
SH4260	Plumbing - Submit Form WW046 (Part 1 & 2) to WSD (Su	90	02-Feb-16	01-May-16	13-Apr-16	11-Jul-16	0%	-71	384																											
Summary Programme																																				
Preliminary / Pre-Construction																																				
BIM / CSD / CBWD																																				
SM0040	M+ Podium - Prepare & Submit BIM / CBWD / CBWD	171	30-Nov-15	25-Jun-16	30-Nov-15 A	27-Sep-16	0%	-77	88																											
SM0060	M+ Tower - Prepare & Submit BIM / CBWD / CBWD	330	29-Mar-16	27-Apr-17	03-May-16	13-Jun-17	0%	-38	22																											
SM0080	CSF Block - Prepare & Submit BIM / CBWD / CBWD	249	13-Feb-16	13-Dec-16	16-May-16	15-Mar-17	0%	-73	82																											
SM0100	RDE Bldg - Prepare & Submit BIM / CBWD / CBWD	249	13-Feb-16	13-Dec-16	16-May-16	15-Mar-17	0%	-73	82																											
SM0120	ICP - Prepare & Submit BIM / CBWD / CBWD	11	02-Oct-15	20-Feb-16	31-Mar-16	13-Apr-16	0%	-41	-39																											
SM0140	SPS - Prepare & Submit BIM / CBWD / CBWD	0	02-Oct-15	06-Feb-16	31-Mar-16	31-Mar-16	0%	-39	835																											
Facade - Design / Procurement / Delivery																																				
SM0150	Award Specialist Subcontractor	0	22-Oct-15		31-Mar-16		0%	-128	835																											
SM0160	Facade - Schematic Design	118	15-Dec-15	06-May-16	15-Dec-15 A	24-May-16	0%	-14	10																											

Activity ID	Activity Name	Ori. Dur.	BaseLine Start	BaseLine Finish	Forecast / Actual Start	Forecast / Actual Finish	% Compl.	Finish Variance	Current Float	March 2016					April 2016					May 2016					June 2016					July 2016			
										28	06	13	20	27	03	10	17	24	01	08	15	22	29	05	12	19	26	03	10	17			
Facade	SM0180	Facade - Shop Drawings	128	05-Mar-16	06-Aug-16	05-Mar-16 A	06-Aug-16	0%	0	30																							
	SM0200	Facade - BD Embed Submission, consent & appvl for M+ P	422	17-Feb-16	06-Feb-17	22-Mar-16 A	06-Feb-17	0%	0	24																							
	SM0240	Facade - Materials Submission	216	22-Oct-15	24-Dec-16	31-Mar-16	17-Dec-16	0%	5	32																							
	SM0260	Facade - Visual Mock-Up (dwgs, ordering, sample, Insptn 8	168	27-Oct-15	18-May-16	18-Jan-16 A	04-Jun-16	0%	-15	9	Facade - Visual Mock-Up (c																						
Structural Steel - Design / Procurement / Delivery																																	
SM0320	Award Specialist Subcontractor	0	02-Oct-15		31-Mar-16		0%	-144	74	Award Specialist Subcontractor, Award Specialist Subcontractor, 31-M																							
SM0380	Steelworks - Fabrication & Delivery of Composite Column t	158	02-Mar-16	07-Jun-16	17-Feb-16 A	07-Jun-16	0%	0	2	Steelworks - Fabrication																							
SM0400	Steelworks - Fabrication & Delivery of Steel Trusses to Site	238	02-Mar-16	29-Sep-16	17-Feb-16 A	06-Oct-16	0%	-5	63																								
Building Services - Design / Procurement / Delivery																																	
SM0410	Award Specialist Subcontractor	0	01-Dec-15		31-Mar-16		0%	-94	36	Award Specialist Subcontractor, Award Specialist Subcontractor, 31-M																							
SM0420	Building Services - Shop Drawings & Materials Submission	231	01-Dec-15	07-Sep-16	01-Dec-15 A	24-Sep-16	0%	-14	77																								
Lift and Escalator - Design / Procurement / Delivery																																	
SM0450	Award Specialist Subcontractor	0	01-Dec-15		31-Mar-16		0%	-94	63	Award Specialist Subcontractor, Award Specialist Subcontractor, 31-M																							
SM0460	Lifts & Escalators - Shop Drawings & Materials Submission	207	01-Dec-15	10-Aug-16	01-Dec-15 A	07-Dec-16	0%	-99	101																								
ABWF - Design / Procurement / Delivery																																	
SM0490	Award Specialist Subcontractor	0	30-Nov-15		31-Mar-16		0%	-95	626	Award Specialist Subcontractor, Award Specialist Subcontractor, 31-M																							
SM0500	ABWF Works - Shop Drawings & Materials Submission	237	30-Nov-15	13-Sep-16	30-Nov-15 A	01-Nov-16	0%	-39	627																								
Construction																																	
M+ Podium & Tower																																	
M+ Foundation & Basement																																	
SM1010	Excavation & ELS Works	428	02-Nov-15	07-Mar-17	02-Nov-15 A	07-Mar-17	0%	0	6																								
SM1020	Pilecaps & U/G Drainage Construction	124	09-Nov-15	30-Aug-16	04-Jan-16 A	15-Aug-16	0%	13	88																								
SM1030	B2 Slab & RC Structure to B1/F	477	17-Dec-15	24-Jun-17	25-Jan-16 A	24-Jun-17	0%	0	15																								
SM1040	B1 Slab & RC Structure to LG/F	202	19-Mar-16	18-Feb-17	15-Mar-16 A	03-Feb-17	0%	13	18																								
SPS																																	
SM1465	SPS - ELS Works (Provisional)	61	11-Feb-16	26-Apr-16	31-Mar-16	14-Jun-16	0%	-39	-37	SPS - ELS Works (Pr																							
ICP																																	
SM1415	ICP - ELS Works	134	22-Feb-16	26-Jul-16	14-Apr-16	23-Sep-16	0%	-50	-50																								
External Works																																	
SM1400	M+ External Works	471	10-Dec-15	10-Nov-17	12-Apr-16	11-Nov-17	0%	0	222																								

# **Lyric Theatre Complex**

Activity ID	Activity Name	Durrn. (Days)	Baseline Start	Baseline Finish	Start Date	End Date	Physical % Complete	Finish Variance	Float (Days)																							
F2 Foundation Works for Lyric Theatre Complex (5WRP)										1	2	3	4	5	6	7	8	9	10	11	12	13	14	15	16	17	18	19	20	21	22	23
Summary for Major Works																																
Pre-bored H-Pile																																
Pre-bored H-Pile Construction																																
LT.0087	Trial Pile and Obtain BD's Acknowledgement	18	22-Feb-16	12-Mar-16	08-Mar-16 A	09-Mar-16 A	100%	4																								
LT.0088	Predrilling; 57 nos.	71	20-Feb-16	20-May-16	01-Mar-16 A	03-Jun-16	80%	-12	58																							
LT.0089	Pre-bored H-Pile Construction; Rig 1, 131 nos	243	21-Mar-16	14-Jan-17	17-Mar-16 A	02-Feb-17	7.6%	-14	-11																							
LT.2225	Pre-bored H-Pile Construction; Rig 2, 134 nos	255	23-Mar-16	03-Feb-17	30-Mar-16 A	11-Feb-17	8.4%	-7	-5																							
Option Piling Works in Area 3 - Pre-bored H-Pile																																
LT.0091	Option Area 3 Prebored H-Pile Predrilling; 1 no.	5	19-Apr-16	25-Apr-16	25-Jul-16	29-Jul-16	0%	-78	12																							
LT.0092	Option Area 3 Pre-bored H-Pile Construction; Rig 1, 3 nos.	14	17-Jan-17	06-Feb-17	04-Feb-17	21-Feb-17	0%	-13	-13																							
BA14 and Testing																																
LT.0094	Submission of BA14	6	06-Mar-17	12-Mar-17	21-Mar-17	27-Mar-17	0%	-15	-15																							
LT.0095	CA's Selection of Proof Drilling Locations	14	06-Feb-17	20-Feb-17	21-Feb-17	07-Mar-17	0%	-15	-15																							
LT.0096	Proof Drilling	14	20-Feb-17	06-Mar-17	07-Mar-17	21-Mar-17	0%	-15	-15																							
LT.0097	BD's Selection of Test Piles	28	12-Mar-17	09-Apr-17	27-Mar-17	24-Apr-17	0%	-15	23																							
LT.0098	Load Testing and Submit Reports	42	09-Apr-17	21-May-17	24-Apr-17	05-Jun-17	0%	-15	24																							
LT.0099	BD's Acknowledgement	45	21-May-17	05-Jul-17	05-Jun-17	20-Jul-17	0%	-15	23																							
Bored Pile																																
Bored Pile Construction																																
LT.0102	Predrilling; 147 nos.	125	20-Feb-16	25-Jul-16	02-Mar-16 A	24-Jun-16	71%	25	63																							
LT.0103	Bored Pile Construction; RCD Rig 1, 24 nos.	244	23-Mar-16	18-Jan-17	12-Mar-16 A	30-Dec-16	15%	15	39																							
LT.1895	Bored Pile Construction; RCD Rig 2, 27 nos.	268	23-Mar-16	18-Feb-17	17-Mar-16 A	14-Feb-17	11%	4	4																							
LT.1905	Bored Pile Construction; RCD Rig 3, 25 nos.	243	30-Mar-16	19-Jan-17	21-Mar-16 A	19-Jan-17	10%	0	6																							
LT.1915	Bored Pile Construction; RCD Rig 4, 26 nos.	245	30-Mar-16	23-Jan-17	24-Mar-16 A	18-Jan-17	10%	4	24																							
LT.1925	Bored Pile Construction; RCD Rig 5, 16 nos.	200	11-Apr-16	08-Dec-16	26-Apr-16 A	24-Dec-16	2%	-14	42																							
LT.1935	Bored Pile Construction; RCD Rig 6, 14 nos.	142	02-Jul-16	17-Dec-16	02-Jul-16	17-Dec-16	0%	0	48																							
LT.1945	Bored Pile Construction; RCD Rig 7, 15 nos.	178	15-Jul-16	18-Feb-17	14-Jul-16	16-Feb-17	0%	1	2																							
LT.2215	Sonic Logging and Interface Coring Test	145	06-Sep-16	04-Mar-17	05-Sep-16	02-Mar-17	0%	2	2																							
Option Piling Works in Area 3 - Bored Pile																																
LT.0105	Option Area 3 Bored Pile Predrilling; 1 nos.	4	25-Jul-16	29-Jul-16	25-Jul-16	29-Jul-16	0%	0	38																							
LT.0106	Option Area 3 Bored Pile Construction; RCD Rig 3, 1 no.	17	20-Jan-17	11-Feb-17	20-Jan-17	11-Feb-17	0%	0	6																							
BA14 and Testing																																
LT.0108	Submission of BA14	6	04-Mar-17	11-Mar-17	03-Mar-17	09-Mar-17	0%	2	2																							
LT.0109	BD's Selection of Test Piles	28	11-Mar-17	08-Apr-17	10-Mar-17	07-Apr-17	0%	2	2																							
LT.0110	Concrete Coring Test and Submit Reports	24	08-Apr-17	12-May-17	07-Apr-17	11-May-17	0%	1	2																							
LT.0111	BD's Acknowledgement	45	12-May-17	26-Jun-17	11-May-17	25-Jun-17	0%	2	49																							
BA14 and Testing at Area 6 if Option is Exercised																																
LT.0113	Submission of BA14	3	10-Feb-17	14-Feb-17	06-Feb-17	09-Feb-17	0%	3	26																							
LT.0114	BD's Selection of Test Piles	14	14-Feb-17	28-Feb-17	10-Feb-17	23-Feb-17	0%	4	41																							
LT.0115	Concrete Coring Test and Submit Reports	15	28-Feb-17	17-Mar-17	23-Feb-17	13-Mar-17	0%	3	34																							
Excavation and Lateral Support																																
Pipe Pile																																
LT.0120	Pre-grouting Works at Seawall Area; Portion L01, M15, M16 and M39	40	05-Mar-16	26-Apr-16	05-Mar-16 A	08-Apr-16 A	100%	16																								
LT.0121	Pre-grouting Works at Portion M14 & L05 (105nos), L07 (47nos) & L03 (17nos)	101	30-Jun-16	31-Oct-16	18-Apr-16 A	28-Jul-16	28%	78	117																							
LT.0122	Pipe Pile Construction and Grout Curtain; 641 nos.	215	18-Mar-16	07-Dec-16	13-Mar-16 A	08-Dec-16	14.5%	-1	38																							
Sheet Piles																																
LT.0124	Sheet Piles Installation in Area 6; 3,112m2	67	20-May-16	26-Sep-16	09-Jul-16	26-Sep-16	0%	-1	0																							
BA14																																
LT.0126	Submission of BA14 for Stage 1 ELS Sheet Piling Works at Area 6	2	27-Sep-16	28-Sep-16	27-Sep-16	28-Sep-16	0%	0	0																							
LT.0127	BD's Acknowledgement	14	28-Sep-16	12-Oct-16	28-Sep-16	12-Oct-16	0%	0	0																							
LT.0128	Submission of BA14 for Stage 1 ELS Sheet Piling Works at Area 1 to 5	2	10-Dec-16	12-Dec-16	09-Dec-16	10-Dec-16	0%	1	38																							
LT.0129	BD's Acknowledgement	14	12-Dec-16	26-Dec-16	10-Dec-16	24-Dec-16	0%	2	48																							
Pumping Test																																
LT.0131	Install Area 1 to Area 5 Pumping Test Instrumentation & Wells (14 PW + 28 OW) and Submission of Initial Readir	22	21-Nov-16	15-Dec-16	11-Nov-16	06-Dec-16	0%	8	51																							